

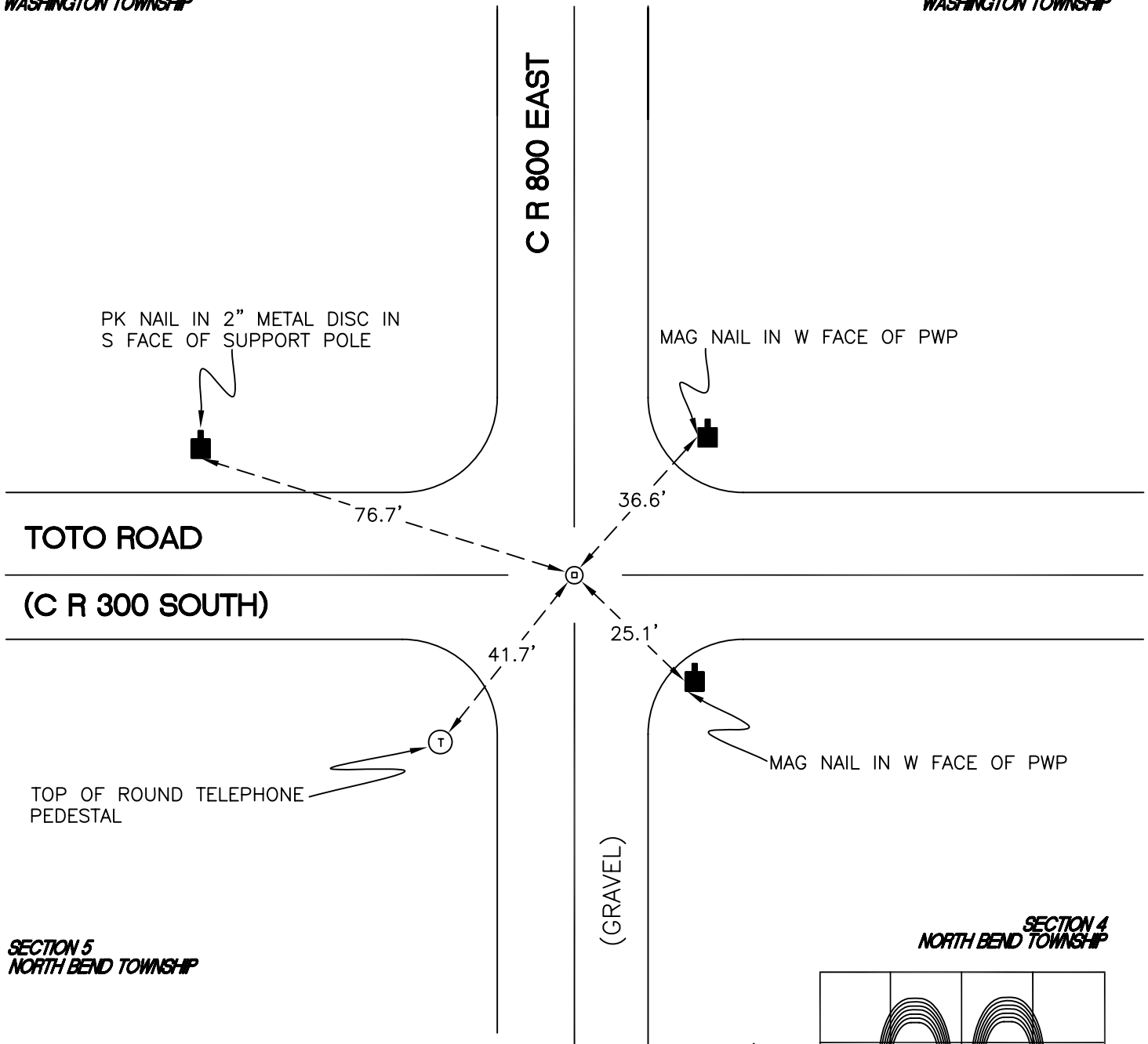
WASHINGTON TOWNSHIP

T 33 N, R 1 W

Z9

SECTION 32
WASHINGTON TOWNSHIP

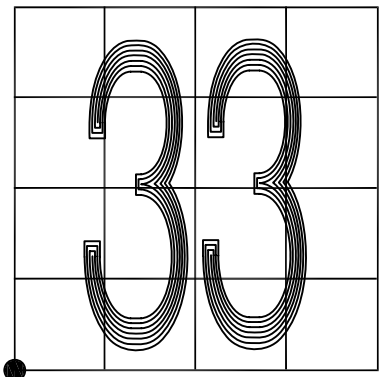
SECTION 33
WASHINGTON TOWNSHIP



SECTION 5
NORTH BEND TOWNSHIP

SECTION 4
NORTH BEND TOWNSHIP

MONUMENT: RR CROSSING BOLT REPLACES RR SPIKE
CORNER OF: RECORD USE
PARTY: JL/PM
DATE: 7-9-2008
COMMENTS: 1' S OF \bar{C} OF TOTO ROAD
1834 SURVEY ESTABLISHED THE NW CORNER OF SECTION 4, NORTH BEND TOWNSHIP, 9 LINKS (5.94') W OF THIS MONUMENT. HOWEVER, THIS MONUMENT IS USED AS THE NORTH BEND CORNER.



CORNER LOCATION IN THE SECTION

Z9