

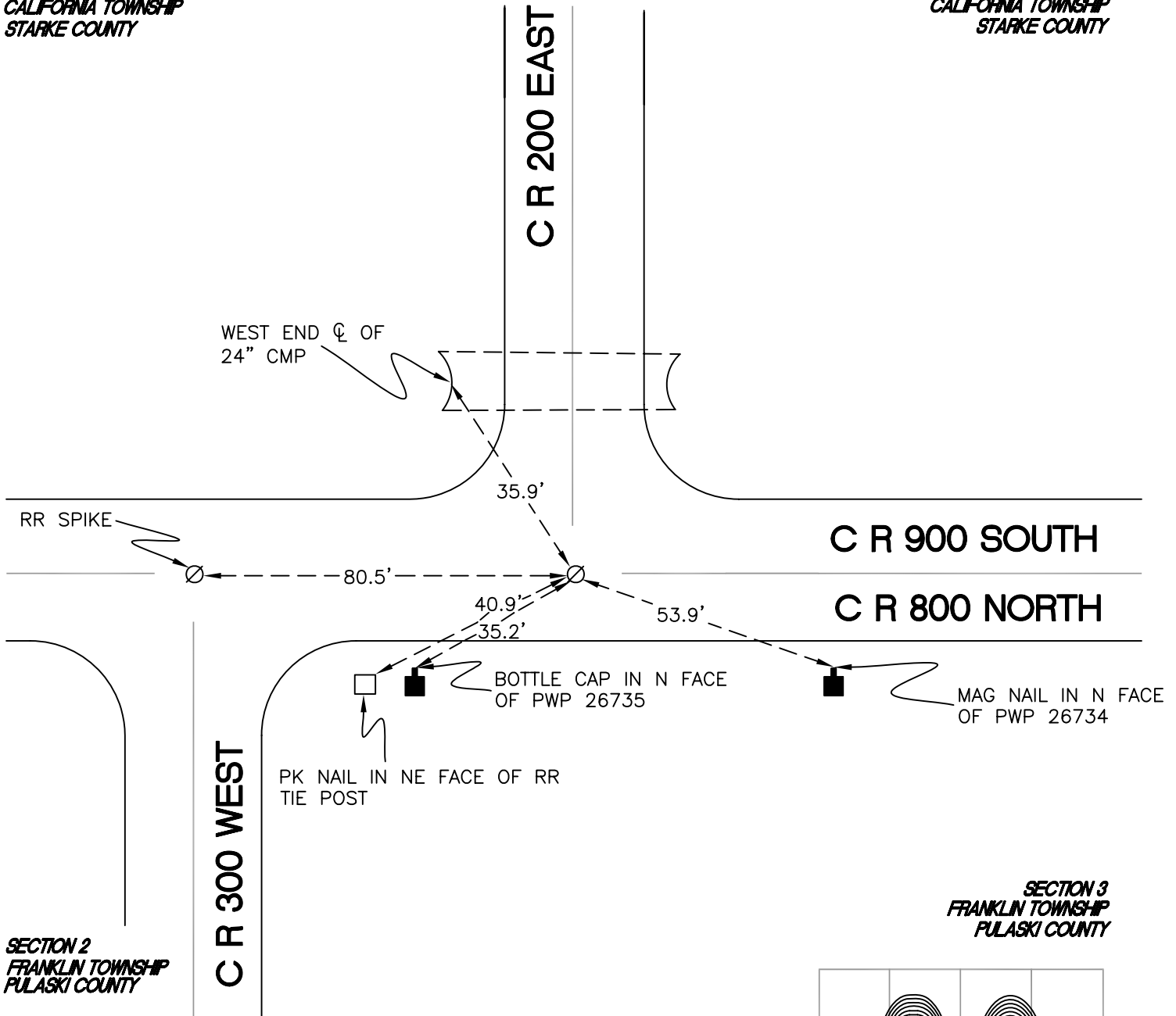
# CALIFORNIA TOWNSHIP

T 32 N, R 2 W

## Z9

SECTION 32  
CALIFORNIA TOWNSHIP  
STARKE COUNTY

SECTION 33  
CALIFORNIA TOWNSHIP  
STARKE COUNTY



SECTION 2  
FRANKLIN TOWNSHIP  
PULASKI COUNTY

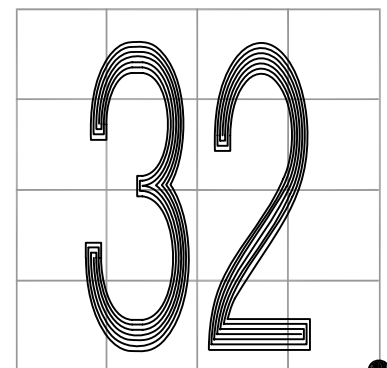
SECTION 3  
FRANKLIN TOWNSHIP  
PULASKI COUNTY

MONUMENT: RR SPIKE

PARTY: DPS/JL

DATE: 7/15/14

COMMENTS: MONUMENT IS 2" BELOW GRADE AND 1' S OF 900 S. FOUND AND REFERENCED BY WIGHTMAN CRAMER IN 1996.



CORNER LOCATION IN THE SECTION

## Z9