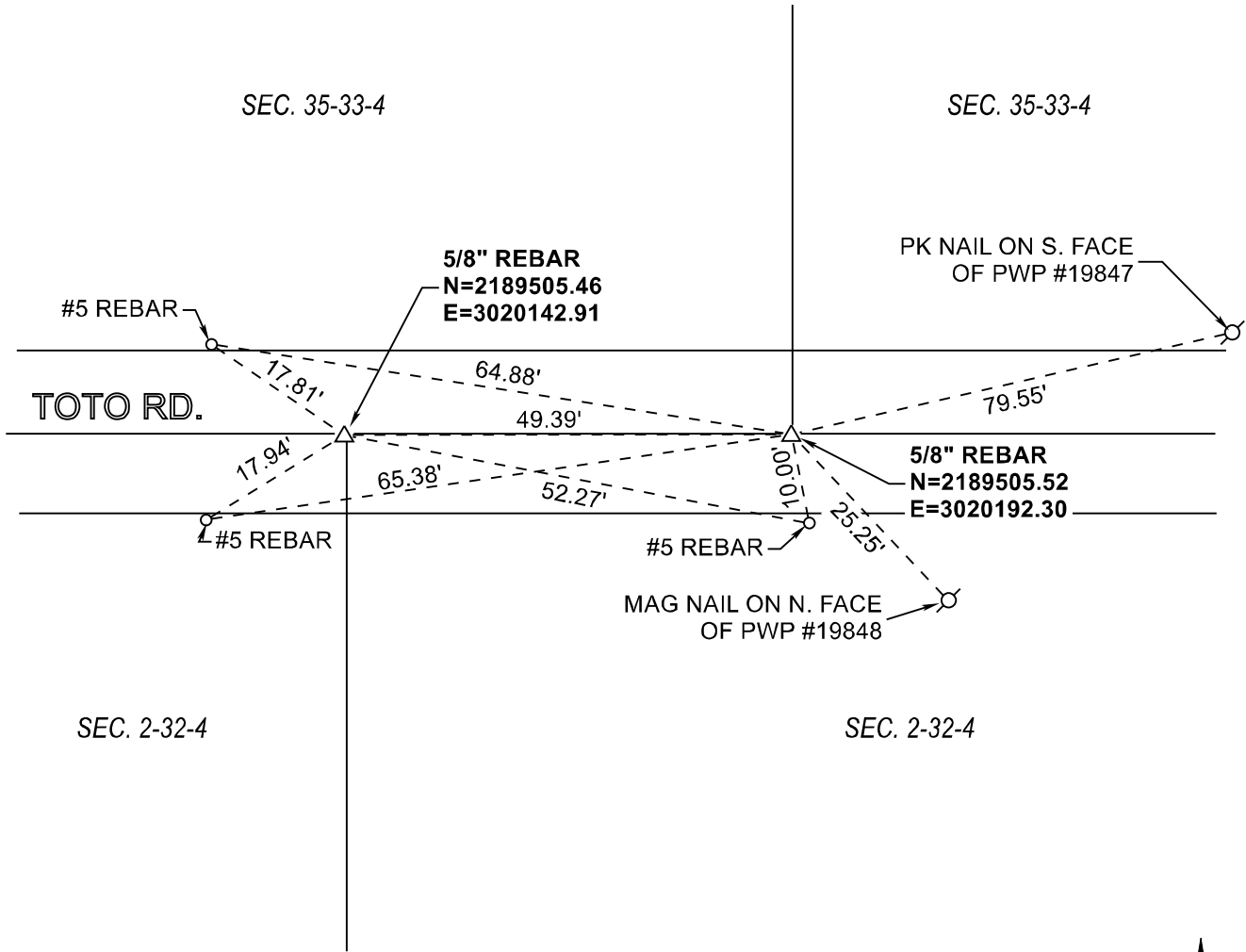


# RAILROAD TOWNSHIP

## T 32 N, R 4 W

### A20



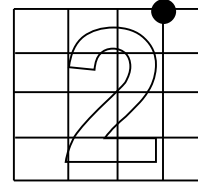
MONUMENT: 5/8" REBAR

PARTY: SES / SIB

DATE: 09/20/2018

DATUM: NAD 83 (2011) INDIANA STATE PLANE WEST

COMMENTS: RECOVERED 3-28-90 BY SJF / DC.  
SOURCE OF INFORMATION: TERRITORIAL ENGINEERING



CORNER LOCATION



### ACRES SURVEYING AND MAPPING, LLC

Stephen E. Shannon, Professional Land Surveyor  
PO Box 796, La Porte, IN 46352  
219-877-8711 • www.acreslandsurveying.com

### Section Corner Records

Railroad Township, Starke County, IN  
(T 32 N, R 4 W)

REVISIONS		JOB NUMBER: 18-1257
DATE:	CODE:	NOT TO SCALE
		DATE:
		DRAWN BY: SES
		REVIEWED BY: SES
		1 1