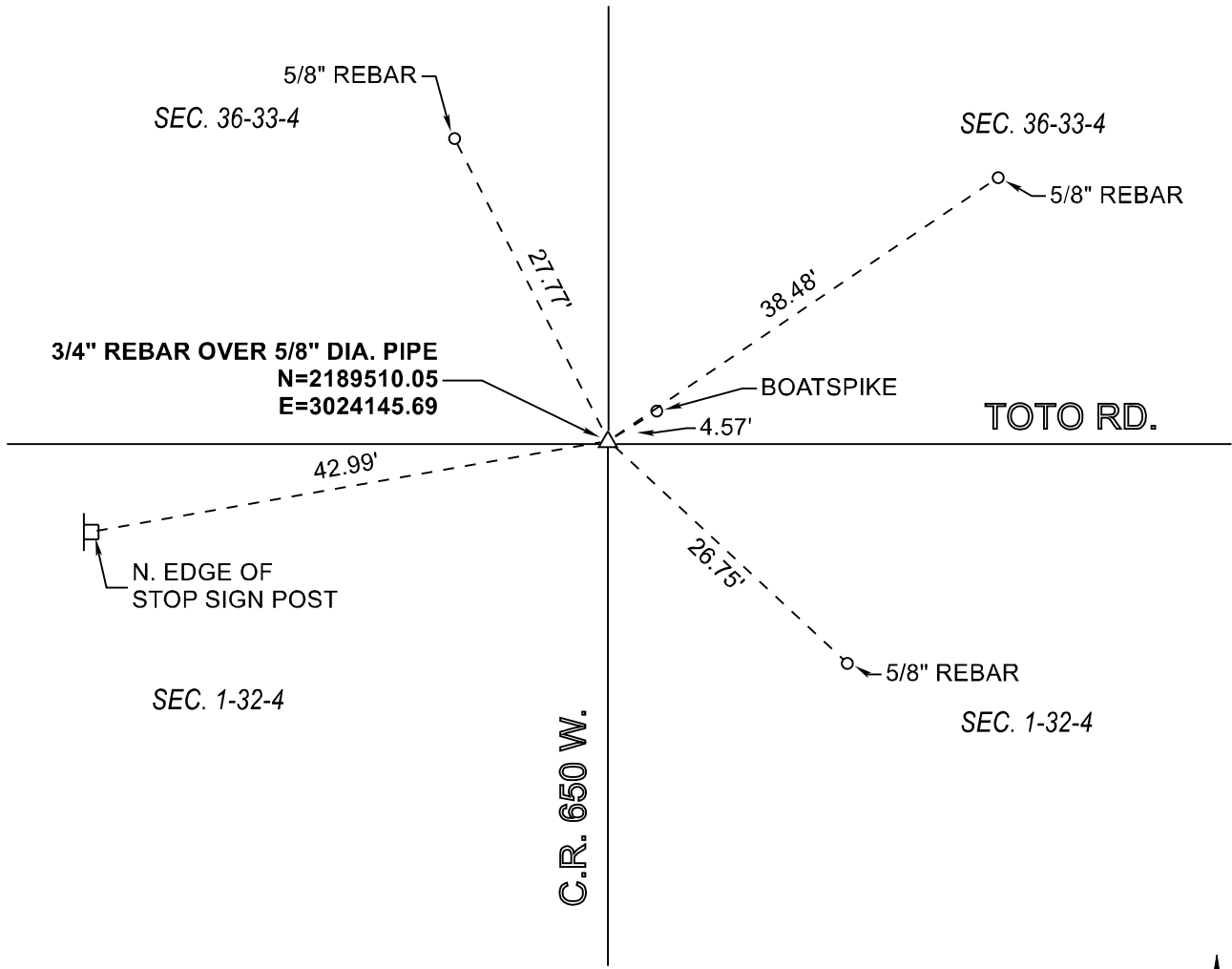


**RAILROAD TOWNSHIP**  
**T 32 N, R 4 W**  
**A23**



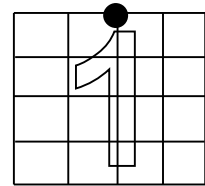
MONUMENT: 3/4" REBAR (SET OVER A 5/8" DIA. PIPE)

PARTY: SES / SIB

DATE: 09/27/2018

DATUM: NAD 83 (2011) INDIANA STATE PLANE WEST

COMMENTS: ON 5-18-83 A RR RAIL (-12") WAS RECOVERED BY VHJ / WA AND A 5/8" IP SET FLUSH OVER IT.



CORNER LOCATION



**ACRES SURVEYING AND MAPPING, LLC**

Stephen E. Shannon, Professional Land Surveyor  
 PO Box 796, La Porte, IN 46352  
 219-877-8711 • www.acreslandsurveying.com

REVISIONS

DATE: CODE:

JOB NUMBER: 18-1257

NOT TO SCALE

DATE:

DRAWN BY: SES

REVIEWED BY:  
 SES

1
1

**Section Corner Records**

Railroad Township, Starke County, IN  
 (T 32 N, R 4 W)