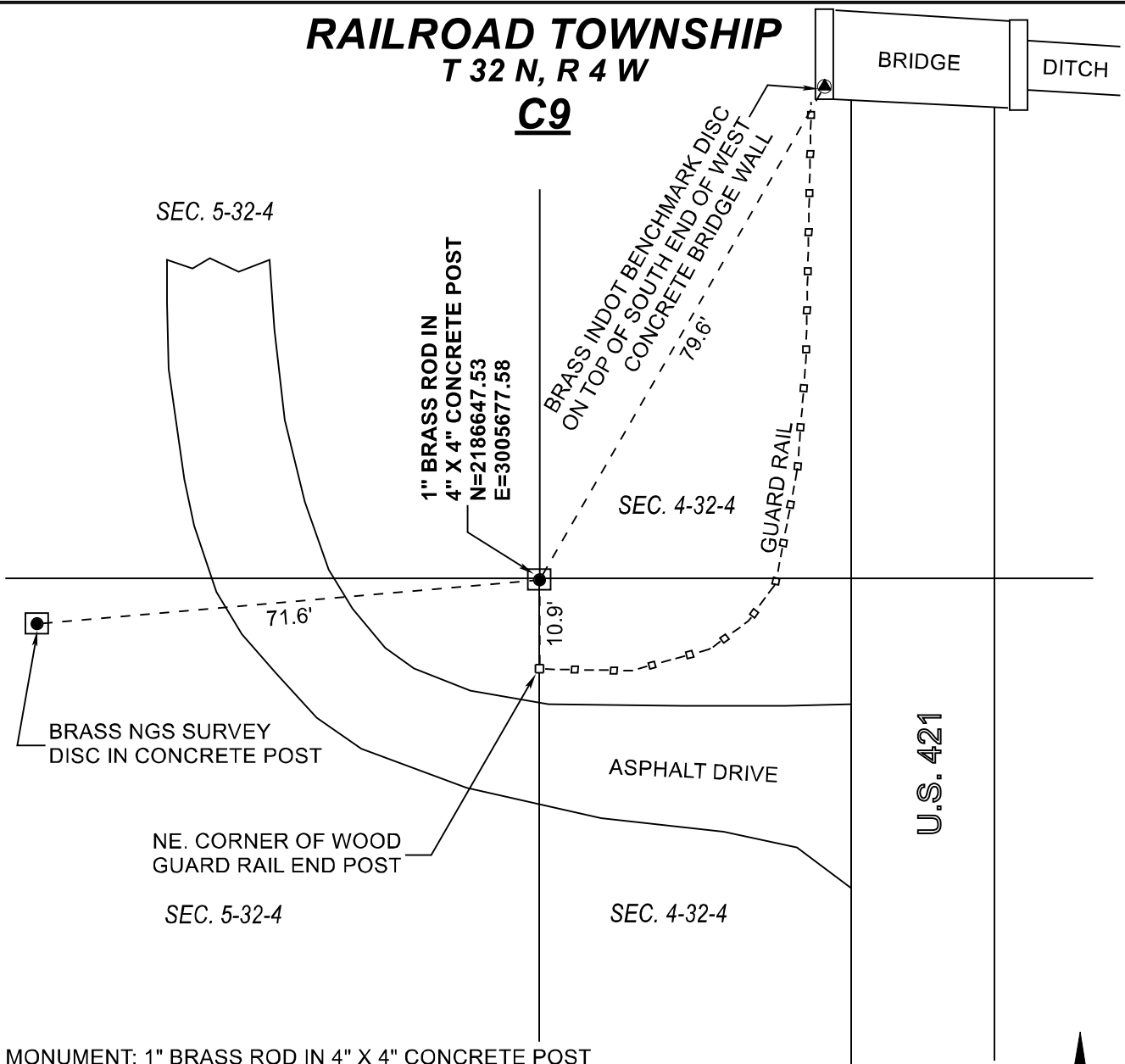


# RAILROAD TOWNSHIP

## T 32 N, R 4 W

### C9



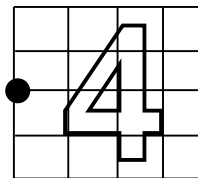
MONUMENT: 1" BRASS ROD IN 4" X 4" CONCRETE POST

PARTY: SES / SIB

DATE: 09/25/2018

DATUM: NAD 83 (2011) INDIANA STATE PLANE WEST

COMMENTS: RECOVERED IN 1988  
 RECOVERED ON 4-3-2008 BY JL / PM  
 INFORMATION ON LOCATION IS FROM INDOT



CORNER LOCATION



### ACRES SURVEYING AND MAPPING, LLC

Stephen E. Shannon, Professional Land Surveyor  
 PO Box 796, La Porte, IN 46352  
 219-877-8711 • www.acreslandsurveying.com

**Section Corner Records**  
 Railroad Township, Starke County, IN  
 (T 32 N, R 4 W)

REVISIONS		JOB NUMBER: 18-1257	
DATE:	CODE:	NOT TO SCALE	
		DATE:	
		DRAWN BY: SES	
		REVIEWED BY:	1 1
		SES	