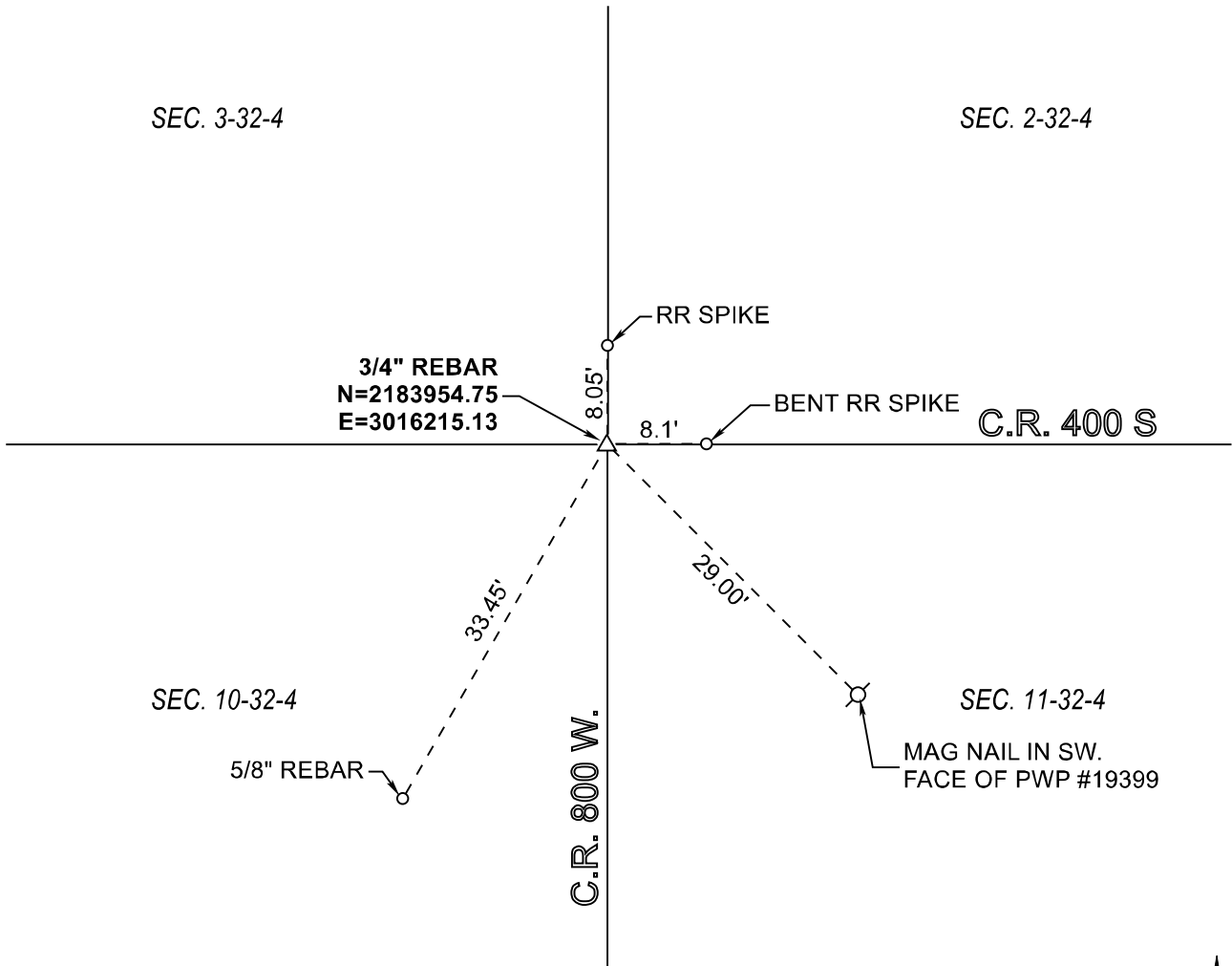


**RAILROAD TOWNSHIP**  
**T 32 N, R 4 W**  
**E17**



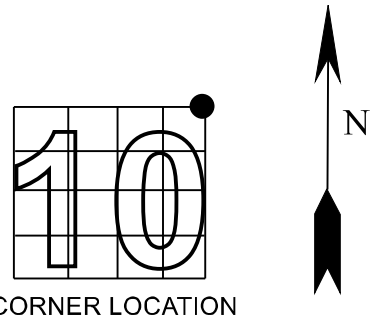
MONUMENT: RR CROSSING BOLT FOUND (-6"). REPLACED WITH 3/4" REBAR.

PARTY: SES / SIB

DATE: 09/27/2018

DATUM: NAD 83 (2011) INDIANA STATE PLANE WEST

COMMENTS: RECOVERED 05-21-1979.



CORNER LOCATION

**ACRES SURVEYING AND MAPPING, LLC**

Stephen E. Shannon, Professional Land Surveyor  
 PO Box 796, La Porte, IN 46352  
 219-877-8711 • www.acreslandsurveying.com

REVISIONS		JOB NUMBER: 18-1257	
DATE:	CODE:	NOT TO SCALE	
		DATE:	
		DRAWN BY: SES	
		REVIEWED BY:	1 1
		SES	

**Section Corner Records**

Railroad Township, Starke County, IN  
 (T 32 N, R 4 W)