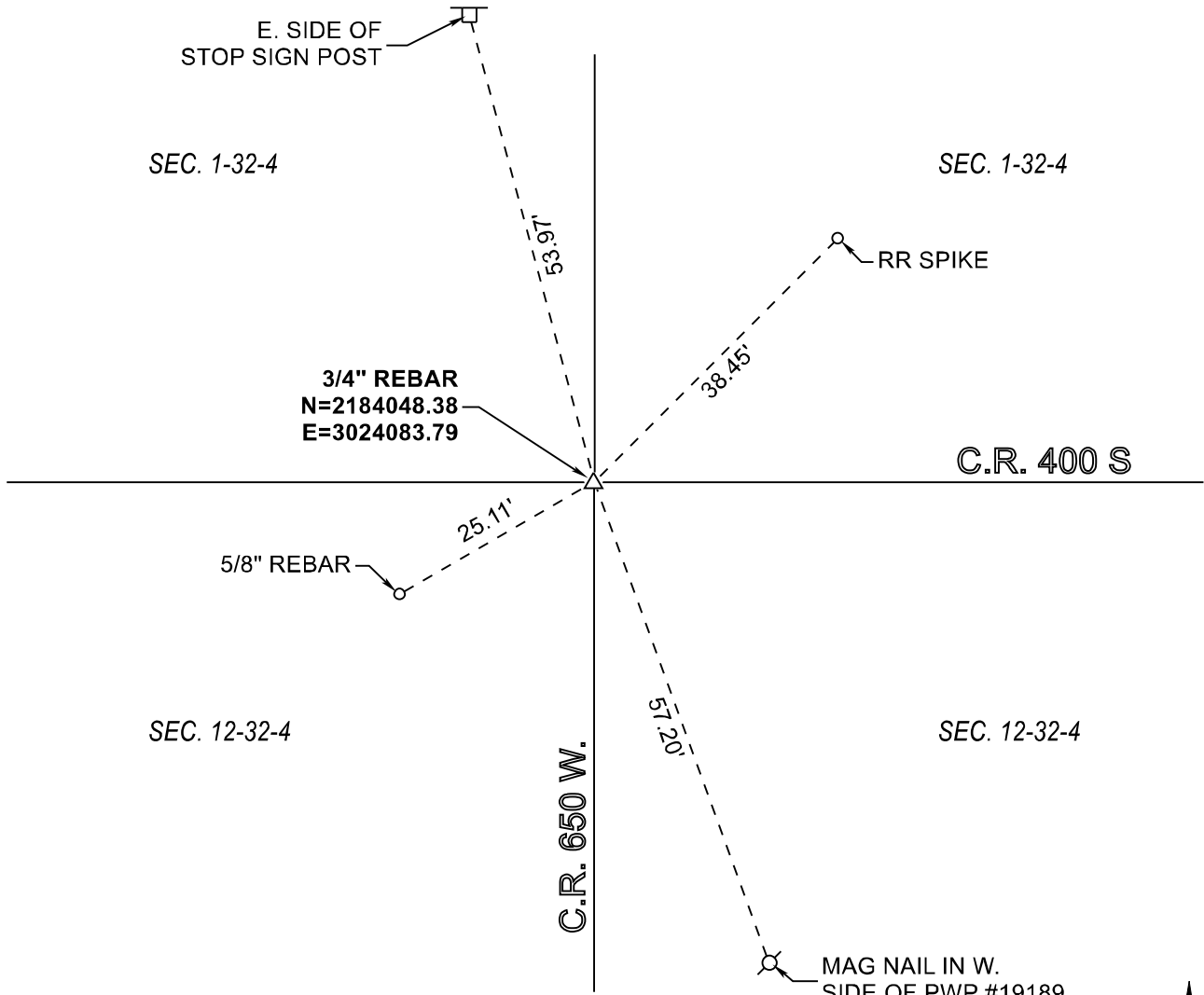


RAILROAD TOWNSHIP

T 32 N, R 4 W

E23



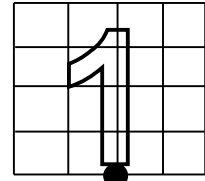
MONUMENT: DAMAGED RR SPIKE FOUND. REPLACED WITH 3/4" REBAR

PARTY: SES / SIB

DATE: 09/27/2018

DATUM: NAD 83 (2011) INDIANA STATE PLANE WEST

COMMENTS: RECOVERED ON 12-17-1999 BY RSA / DS



CORNER LOCATION



ACRES SURVEYING AND MAPPING, LLC

Stephen E. Shannon, Professional Land Surveyor
 PO Box 796, La Porte, IN 46352
 219-877-8711 • www.acreslandsurveying.com

REVISIONS		JOB NUMBER: 18-1257			
DATE:	CODE:	NOT TO SCALE			
		DATE:			
		DRAWN BY: SES			
		REVIEWED BY: SES	<table border="1" style="width: 100%; height: 100%; border-collapse: collapse;"> <tr> <td style="text-align: center; vertical-align: middle;">1</td> </tr> <tr> <td style="text-align: center; vertical-align: middle;">1</td> </tr> </table>	1	1
1					
1					

Section Corner Records

Railroad Township, Starke County, IN
 (T 32 N, R 4 W)