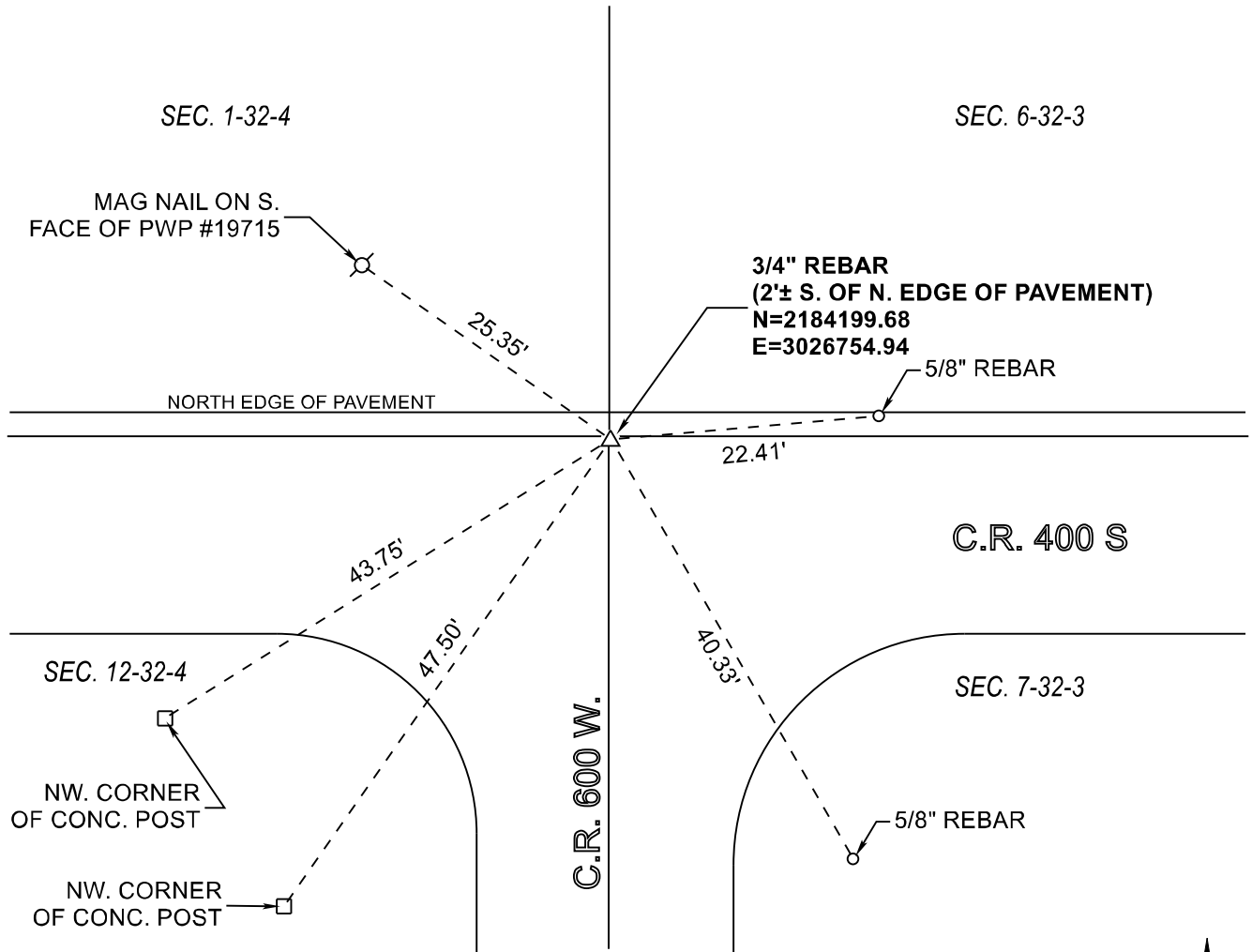


RAILROAD TOWNSHIP

T 32 N, R 4 W

E25

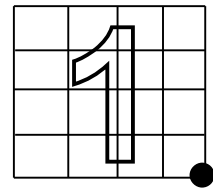


MONUMENT: 1/2" DIAMETER PIPE FOUND IN BAD CONDITION.
REPLACED WITH 3/4" REBAR

PARTY: SES / SIB
DATE: 09/27/2018

DATUM: NAD 83 (2011) INDIANA STATE PLANE WEST

COMMENTS: FOUND 1/2" IP ON 07-19-1984 BY RLP.
FIELD BOOK M-9, PAGE 60.



CORNER LOCATION



ACRES SURVEYING AND MAPPING, LLC

Stephen E. Shannon, Professional Land Surveyor
PO Box 796, La Porte, IN 46352
219-877-8711 • www.acreslandsurveying.com

REVISIONS	
DATE:	CODE:

JOB NUMBER: 18-1257	
NOT TO SCALE	
DATE:	
DRAWN BY: SES	
REVIEWED BY: SES	1 1

Section Corner Records
Railroad Township, Starke County, IN
(T 32 N, R 4 W)