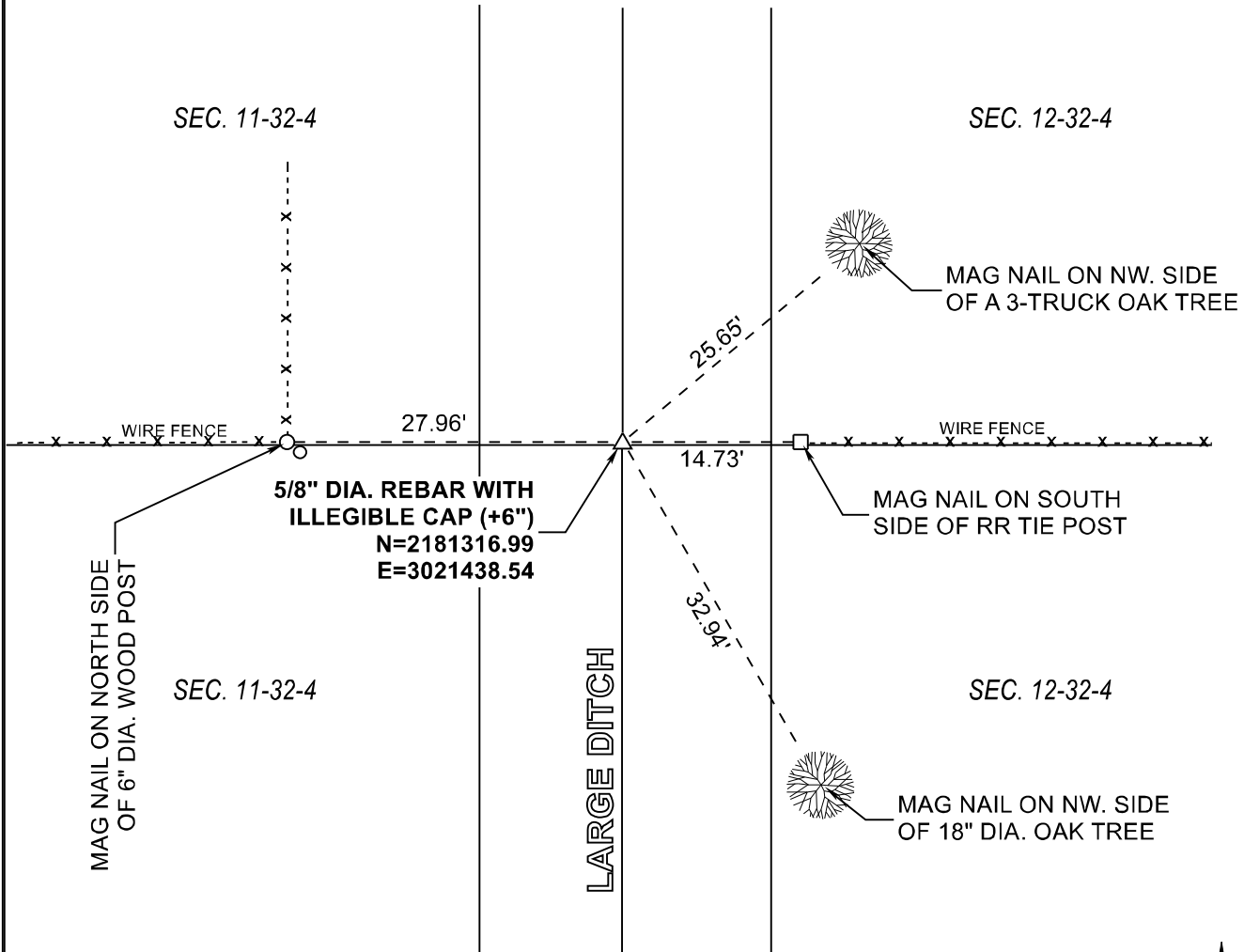


RAILROAD TOWNSHIP

T 32 N, R 4 W

G21



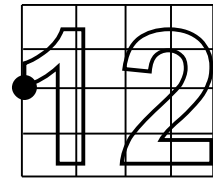
MONUMENT: 5/8" REBAR WITH ILLEGIBLE CAP (+6")

PARTY: SES

DATE: 12/19/2019

DATUM: INDIANA STATE PLANE WEST

COMMENTS:
RECOVERED IN 2000 BY DWC



CORNER LOCATION



ACRES SURVEYING AND MAPPING, LLC

Stephen E. Shannon, Professional Land Surveyor
PO Box 796, La Porte, IN 46352
219-877-8711 • www.acreslandsurveying.com

Section Corner Records

Railroad Township, Starke County, IN
(T 32 N, R 4 W)

REVISIONS		JOB NUMBER: 18-1257	
DATE:	CODE:	NOT TO SCALE	
		DATE:	
		DRAWN BY: SES	
		REVIEWED BY:	1 1
		SES	