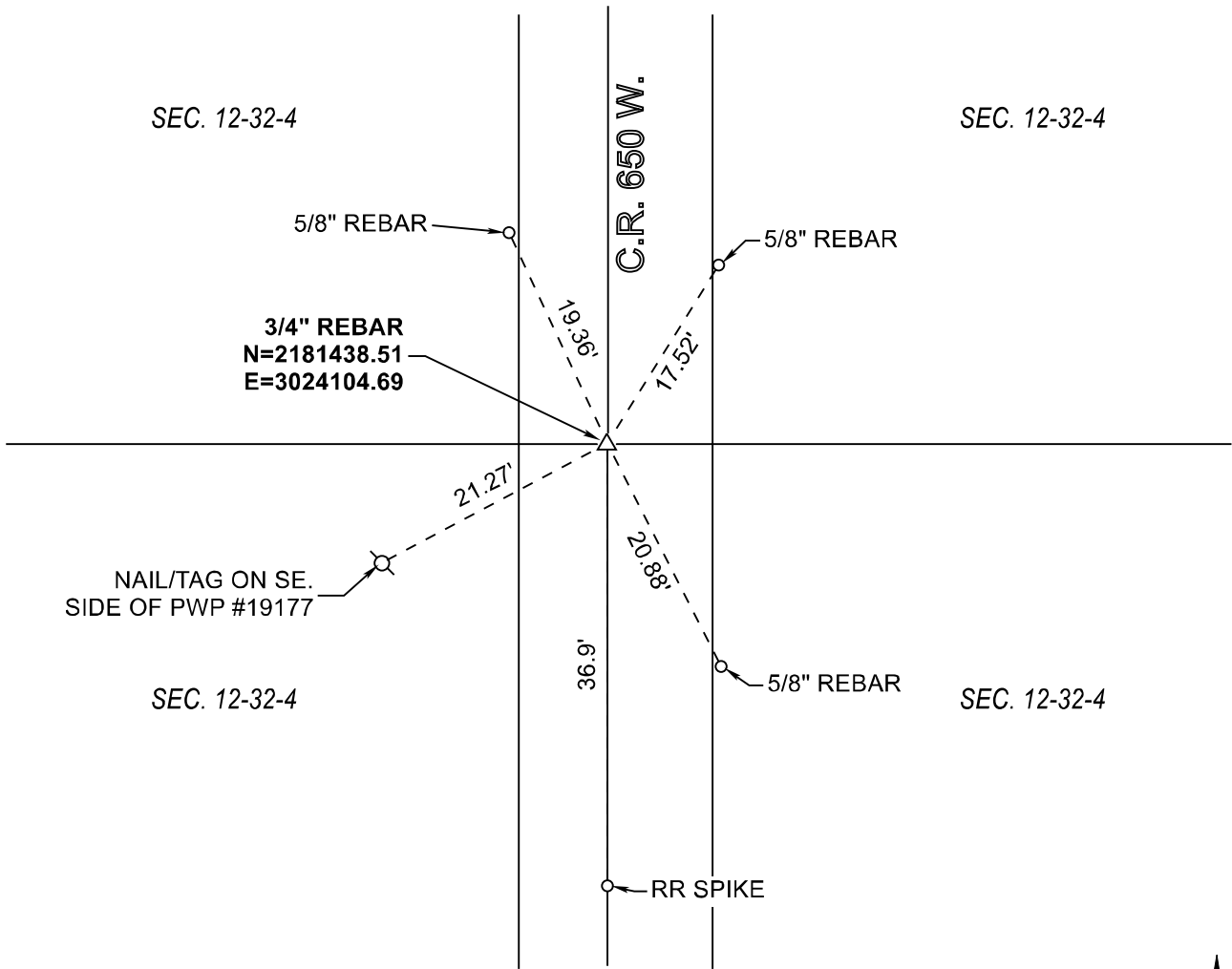


# RAILROAD TOWNSHIP

## T 32 N, R 4 W

### G23



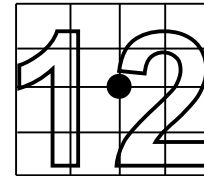
MONUMENT: FOUND RR CROSSING BOLT. REPLACED WITH 3/4" REBAR

PARTY: SES / SIB

DATE: 10/04/2018

DATUM: NAD 83 (2011) INDIANA STATE PLANE WEST

COMMENTS: 03-16-2000 BY DWC



CORNER LOCATION



### ACRES SURVEYING AND MAPPING, LLC

Stephen E. Shannon, Professional Land Surveyor  
 PO Box 796, La Porte, IN 46352  
 219-877-8711 • www.acreslandsurveying.com

### Section Corner Records

Railroad Township, Starke County, IN  
 (T 32 N, R 4 W)

REVISIONS		JOB NUMBER: 18-1257	
DATE:	CODE:	NOT TO SCALE	
		DATE:	
		DRAWN BY: SES	
		REVIEWED BY:	1 1
		SES	