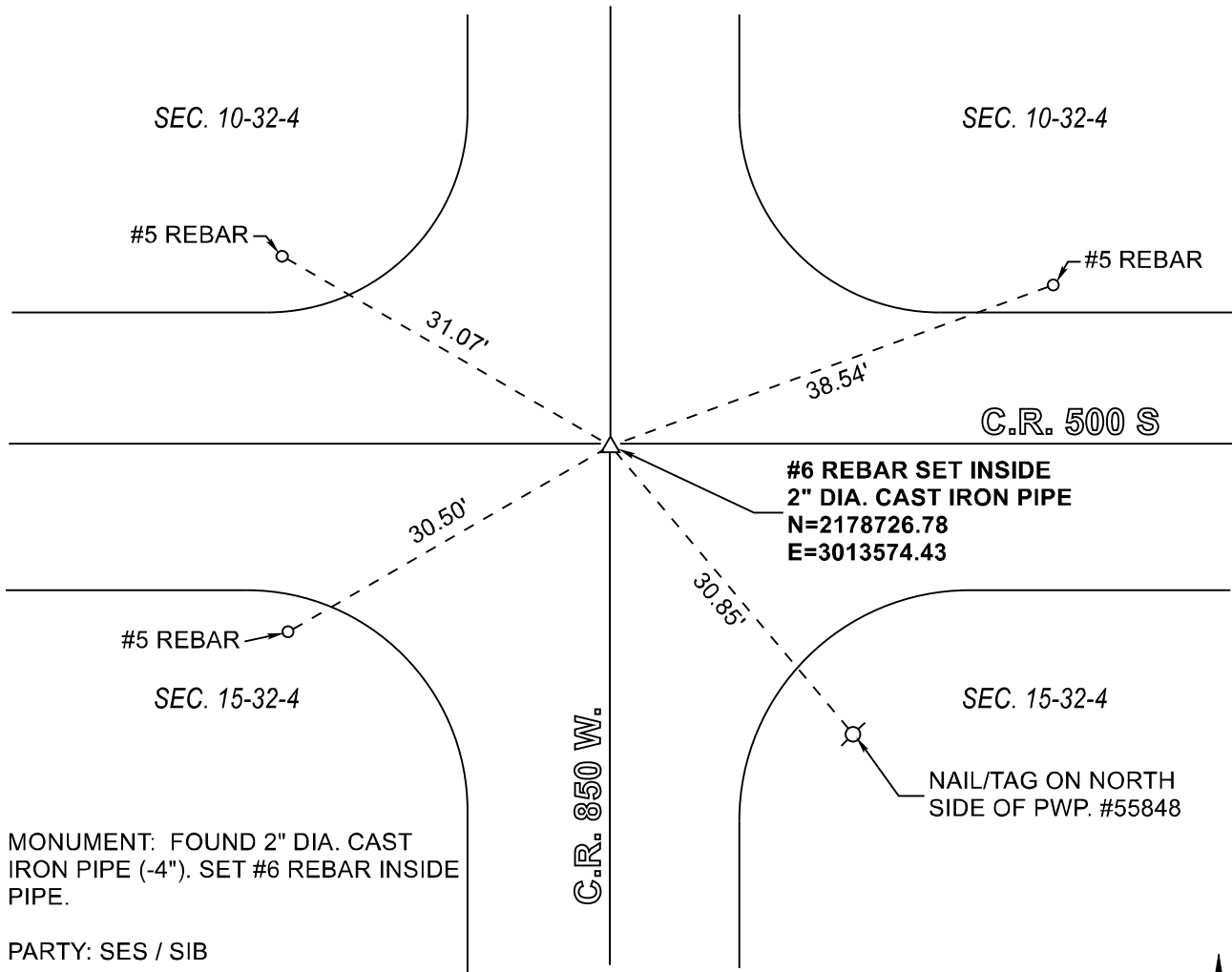


RAILROAD TOWNSHIP

T 32 N, R 4 W

J15



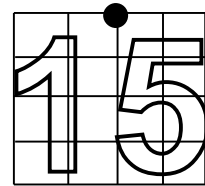
MONUMENT: FOUND 2" DIA. CAST
IRON PIPE (-4"). SET #6 REBAR INSIDE
PIPE.

PARTY: SES / SIB

DATE: 11/01/2018

DATUM: INDIANA STATE PLANE WEST

COMMENTS: 26 OCT. 1982 BY REH
26 SEP. BY 1975 RTB/SS
29JUN 1984 BY RLP
FIELD BOOK M-3, PAGE 16B
CORNER RECORD BOOK 1, PAGE 352
FIELD BOOK M-9, PAGE 12



CORNER LOCATION



ACRES SURVEYING AND MAPPING, LLC

Stephen E. Shannon, Professional Land Surveyor
PO Box 796, La Porte, IN 46352
219-877-8711 • www.acreslandsurveying.com

Section Corner Records

Railroad Township, Starke County, IN
(T 32 N, R 4 W)

REVISIONS

DATE:	CODE:

JOB NUMBER: 18-1257

NOT TO SCALE

DATE:

DRAWN BY: SES

REVIEWED BY:
SES

1
1