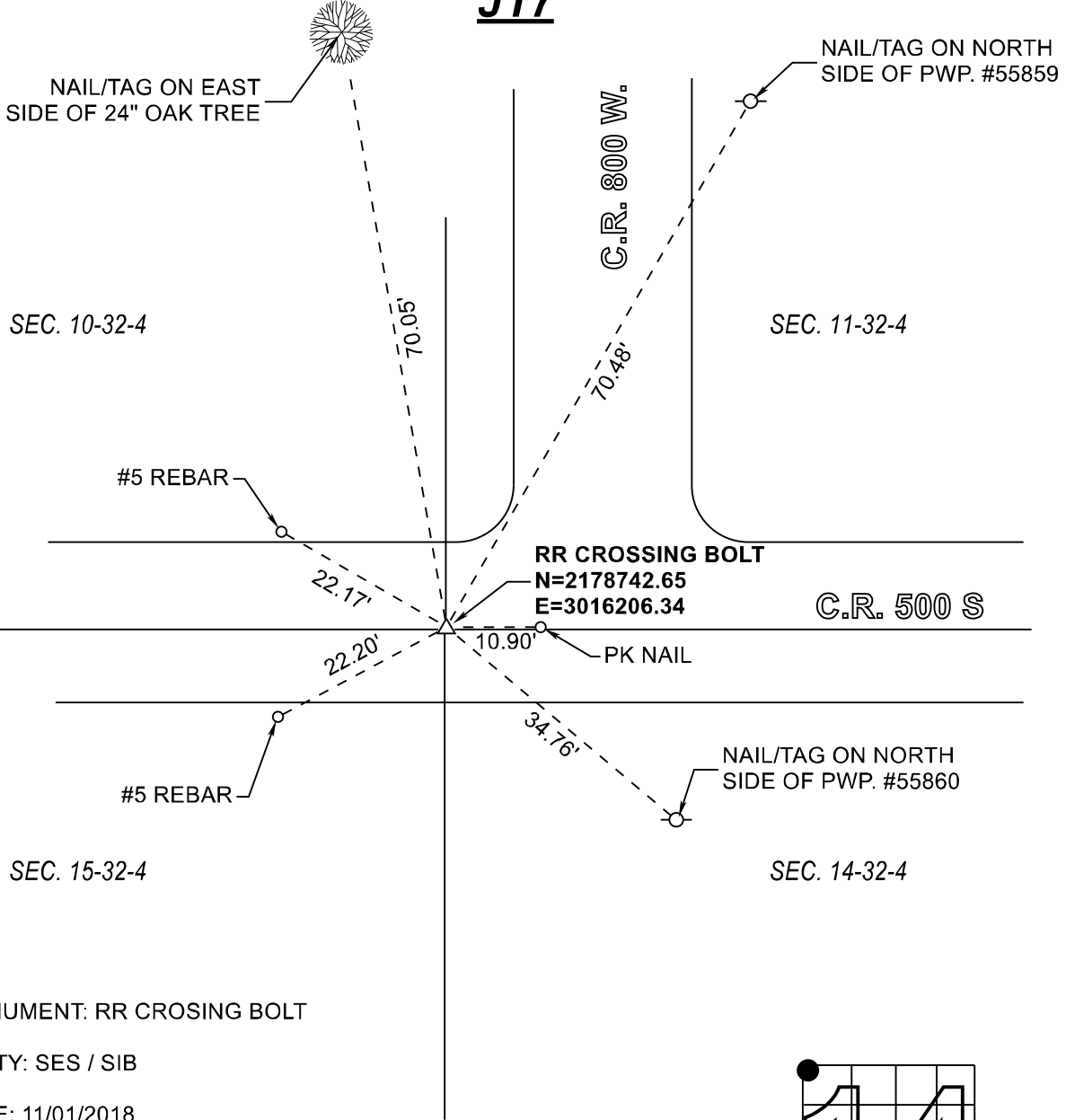


# RAILROAD TOWNSHIP

T 32 N, R 4 W

**J17**



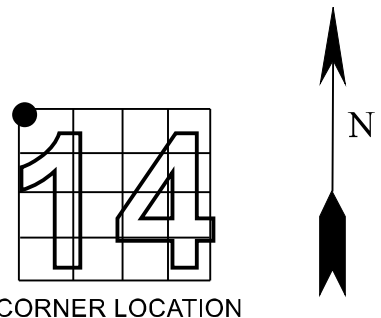
MONUMENT: RR CROSSING BOLT

PARTY: SES / SIB

DATE: 11/01/2018

DATUM: INDIANA STATE PLANE WEST

COMMENTS: 11-26-91 BY DWC RICK



CORNER LOCATION

## ACRES SURVEYING AND MAPPING, LLC

Stephen E. Shannon, Professional Land Surveyor  
 PO Box 796, La Porte, IN 46352  
 219-877-8711 • www.acreslandsurveying.com

### REVISIONS

DATE:	CODE:

JOB NUMBER: 18-1257

NOT TO SCALE

DATE:

DRAWN BY: SES

REVIEWED BY:  
SES

1
1

### Section Corner Records

Railroad Township, Starke County, IN  
 (T 32 N, R 4 W)