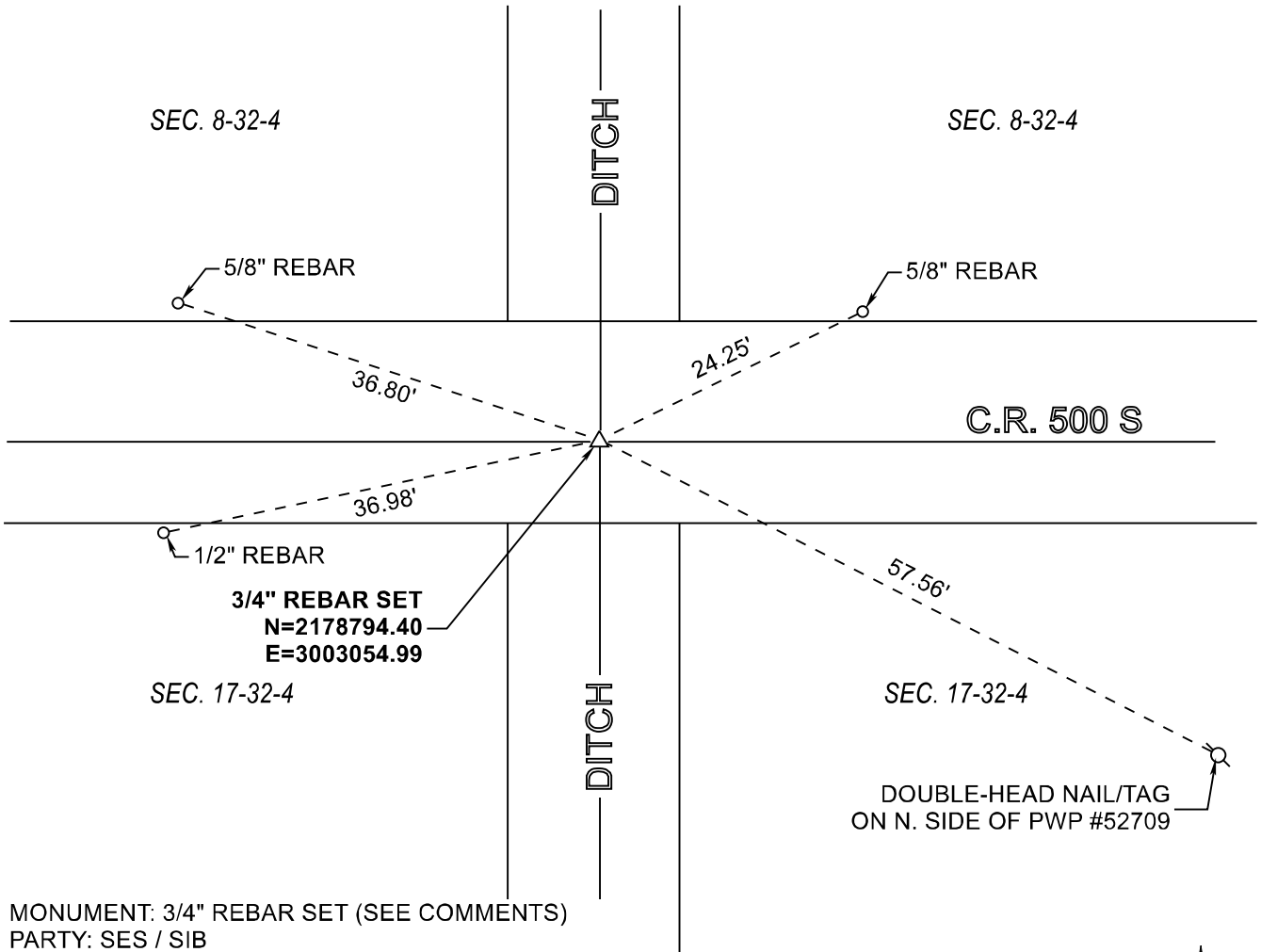
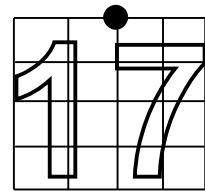


RAILROAD TOWNSHIP
T 32 N, R 4 W
J7



MONUMENT: 3/4" REBAR SET (SEE COMMENTS)
 PARTY: SES / SIB
 DATE: 11/01/2018
 DATUM: NAD 83 (2011) INDIANA STATE PLANE WEST
 COMMENTS:
 DWC / DT WITNESSED A RR CROSSING BOLT IN NOVEMBER OF 1994.
 ON 11/01/2018, NO MONUMENT OR WITNESSES WERE FOUND.
 THEY APPEAR TO HAVE BEEN OBLITERATED BY CULVERT
 RECONSTRUCTION FOR THE DITCH. THIS POINT WAS
 RESTABLISHED USING DISTANCES FROM J5 AND L7 SHOWN ON A
 SURVEY BY PLYMOUTH LAND SURVEYING RECORDED IN
 DOCUMENT #2008003641.



CORNER LOCATION



ACRES SURVEYING AND MAPPING, LLC

Stephen E. Shannon, Professional Land Surveyor
 PO Box 796, La Porte, IN 46352
 219-877-8711 • www.acreslandsurveying.com

Section Corner Records

Railroad Township, Starke County, IN
 (T 32 N, R 4 W)

REVISIONS		JOB NUMBER: 18-1257	
DATE:	CODE:	NOT TO SCALE	
		DATE:	
		DRAWN BY: SES	
		REVIEWED BY: SES	1 1