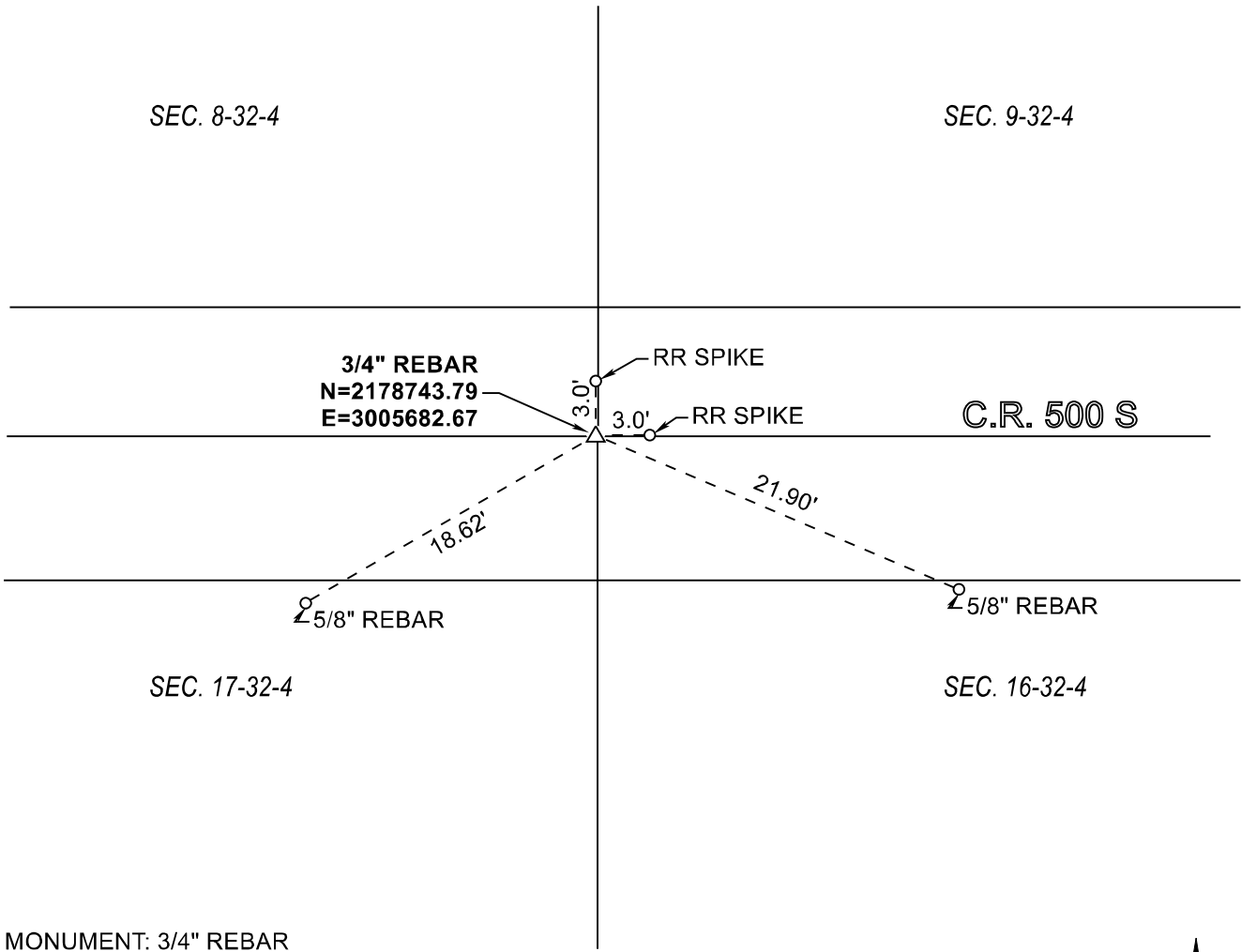


RAILROAD TOWNSHIP
T 32 N, R 4 W
J9



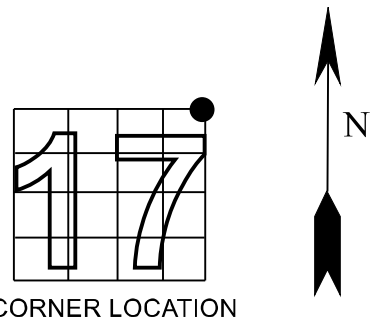
MONUMENT: 3/4" REBAR

PARTY: SES / SIB

DATE: 11/01/2018

DATUM: NAD 83 (2011) INDIANA STATE PLANE WEST

COMMENTS:
 10/22/1982 REH.
 02/07/1980 JBS
 FIELD BOOK M-3, PAGE 16A



CORNER LOCATION

ACRES SURVEYING AND MAPPING, LLC
 Stephen E. Shannon, Professional Land Surveyor
 PO Box 796, La Porte, IN 46352
 219-877-8711 • www.acreslandsurveying.com

REVISIONS		JOB NUMBER: 18-1257	
DATE:	CODE:	NOT TO SCALE	
		DATE:	
		DRAWN BY: SES	
		REVIEWED BY: SES	1 1

Section Corner Records
 Railroad Township, Starke County, IN
 (T 32 N, R 4 W)