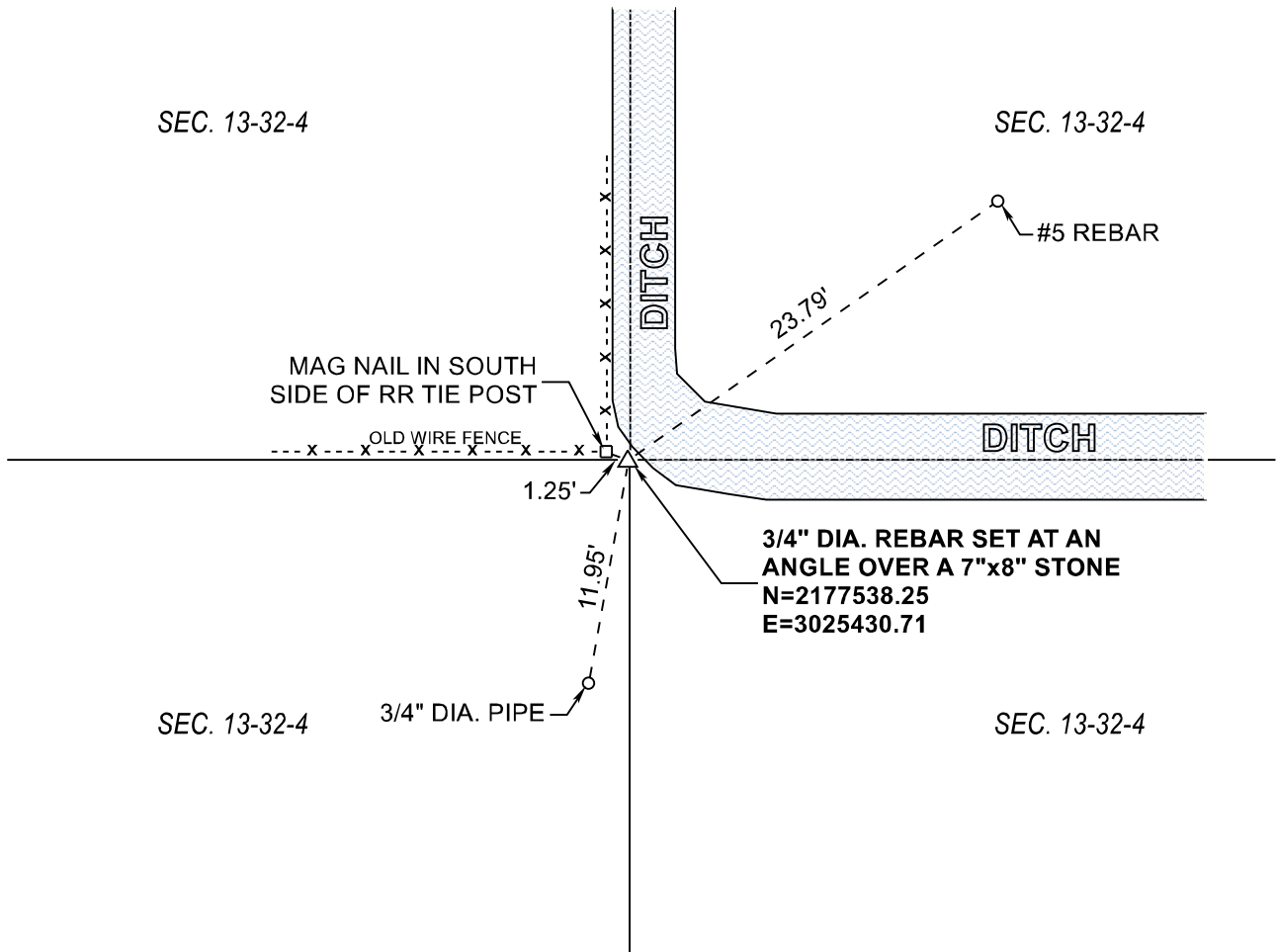


**RAILROAD TOWNSHIP**  
**T 32 N, R 4 W**  
**K24**



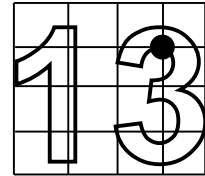
MONUMENT: 3/4" DIA. REBAR SET AT AN ANGLE OVER A DEPRESSION IN THE TOP OF A 7"x8" STONE

PARTY: SES

DATE: 12/18/2019

DATUM: INDIANA STATE PLANE WEST

COMMENTS:  
 THE STONE WAS RECOVERED IN 1982 BY VHJ.  
 SEE SR "D" PAGE 82



CORNER LOCATION



**ACRES SURVEYING AND MAPPING, LLC**

Stephen E. Shannon, Professional Land Surveyor  
 PO Box 796, La Porte, IN 46352  
 219-877-8711 • www.acreslandsurveying.com

**Section Corner Records**

Railroad Township, Starke County, IN  
 (T 32 N, R 4 W)

REVISIONS		JOB NUMBER: 18-1257	
DATE:	CODE:	NOT TO SCALE	
		DATE:	
		DRAWN BY: SES	
		REVIEWED BY:	1 1
		SES	