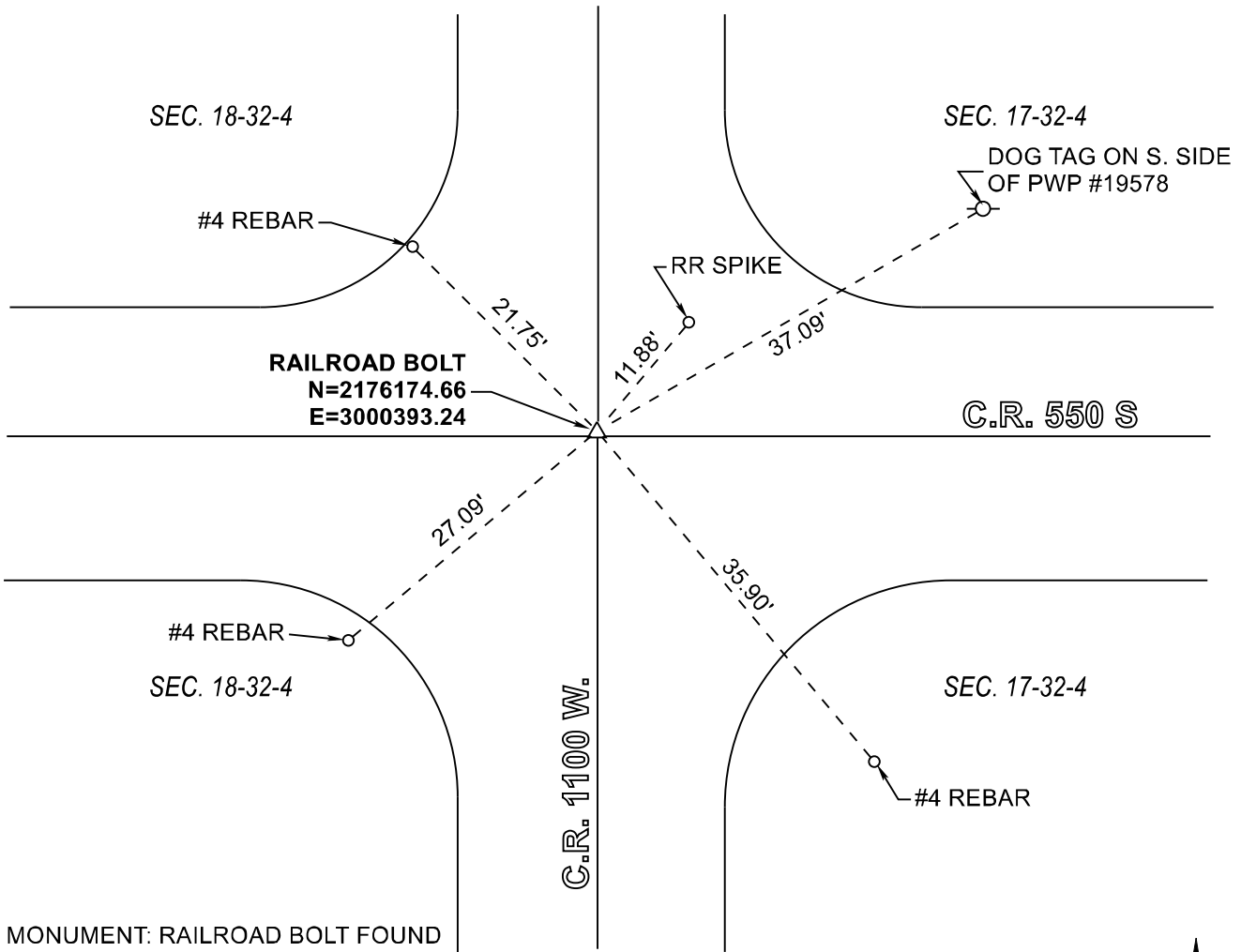


RAILROAD TOWNSHIP

T 32 N, R 4 W

L5



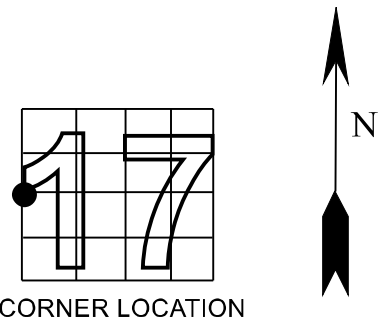
MONUMENT: RAILROAD BOLT FOUND

PARTY: SES / SIB

DATE: 11/15/2018

DATUM: INDIANA STATE PLANE WEST

COMMENTS: 03NOV1982 BY REH
 28JUN1984 BY RLP
 FIELD BOOK M-3, PAGE 21B
 FIELD BOOK ME9, PAGE 6



CORNER LOCATION

ACRES SURVEYING AND MAPPING, LLC

Stephen E. Shannon, Professional Land Surveyor
 PO Box 796, La Porte, IN 46352
 219-877-8711 • www.acreslandsurveying.com

REVISIONS

DATE:	CODE:

JOB NUMBER: 18-1257

NOT TO SCALE

DATE:

DRAWN BY: SES

REVIEWED BY:
 SES

1
1

Section Corner Records

Railroad Township, Starke County, IN
 (T 32 N, R 4 W)