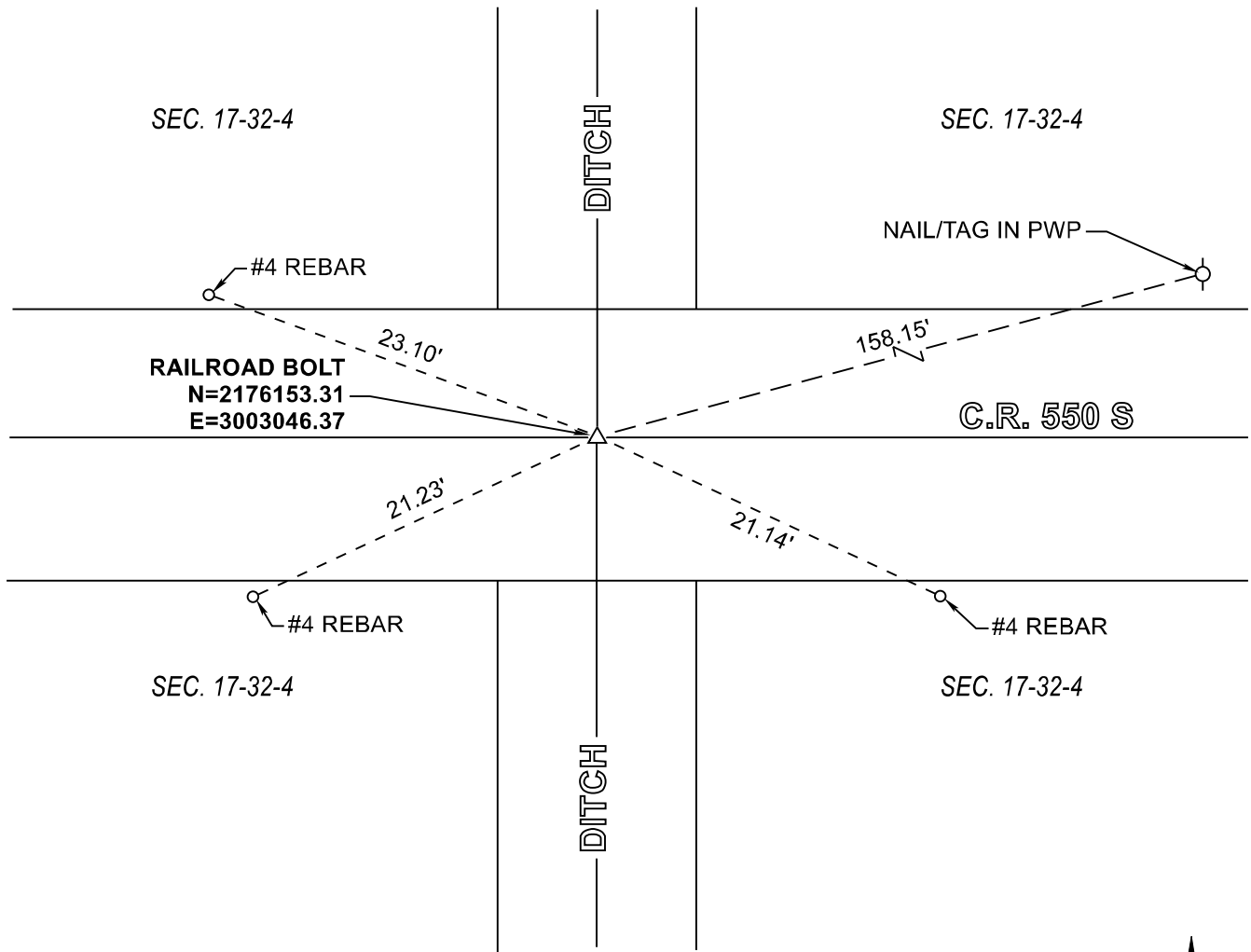


RAILROAD TOWNSHIP

T 32 N, R 4 W

L7



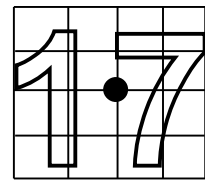
MONUMENT: RAILROAD BOLT FOUND (HELD FOR SURVEY BY PLYMOUTH LAND SURVEYING, RECORDED AS DOCUMENT #2008003641)

PARTY: SES / SIB

DATE: 11/15/2018

DATUM: INDIANA STATE PLANE WEST

COMMENTS:



CORNER LOCATION



ACRES SURVEYING AND MAPPING, LLC

Stephen E. Shannon, Professional Land Surveyor
 PO Box 796, La Porte, IN 46352
 219-877-8711 • www.acreslandsurveying.com

Section Corner Records

Railroad Township, Starke County, IN
 (T 32 N, R 4 W)

REVISIONS		JOB NUMBER: 18-1257	
DATE:	CODE:	NOT TO SCALE	
		DATE:	
		DRAWN BY: SES	
		REVIEWED BY:	1 1
		SES	