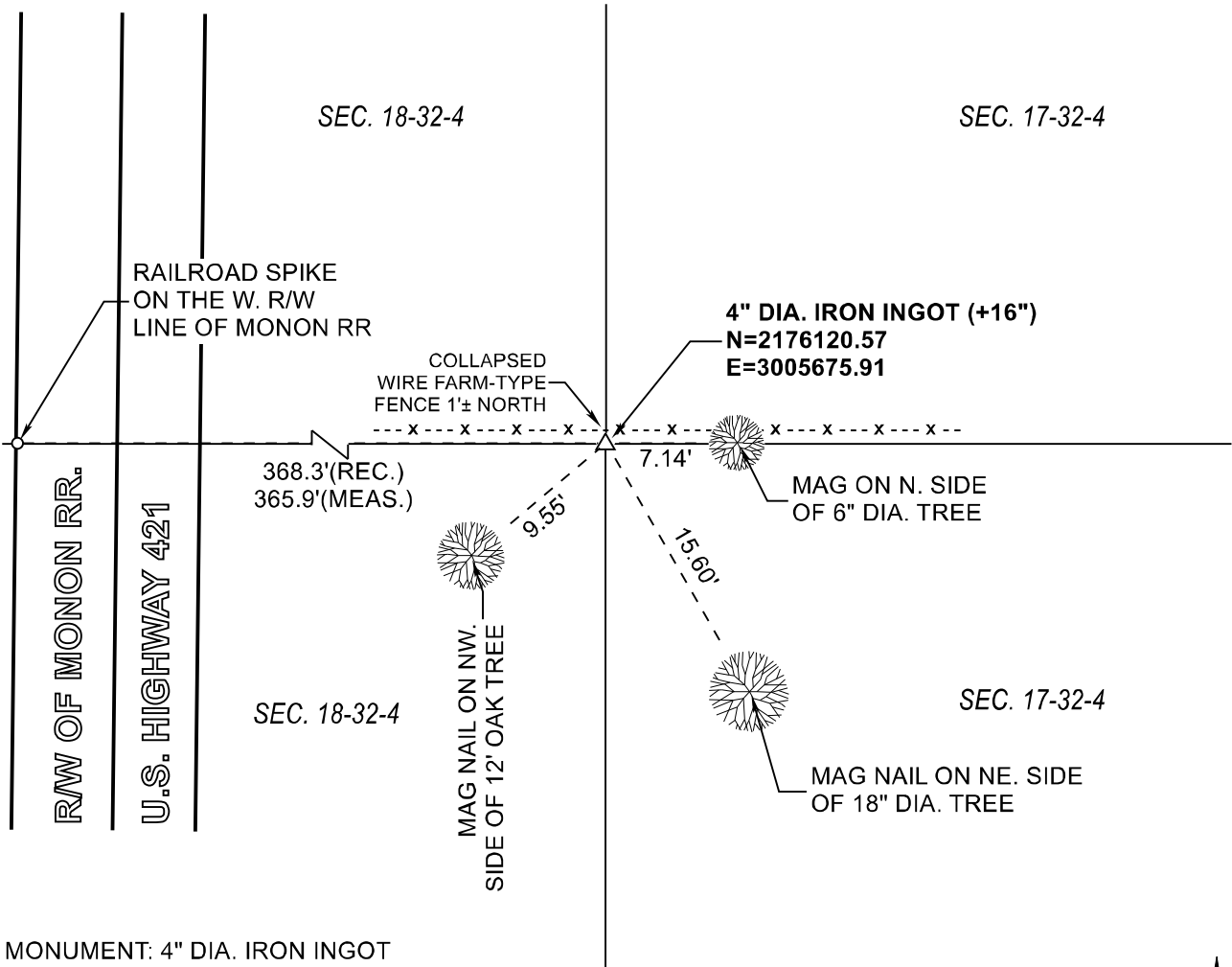


RAILROAD TOWNSHIP

T 32 N, R 4 W

L9



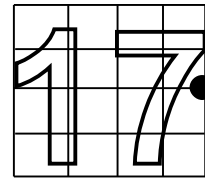
MONUMENT: 4" DIA. IRON INGOT

PARTY: SES / SIB

DATE: 11/15/2018

DATUM: INDIANA STATE PLANE WEST

COMMENTS: 1985 BY SJF
 TERRITORIAL FIELD NOTES
 SR "C", PAGE 43
 SR "B", PAGE 90



CORNER LOCATION



ACRES SURVEYING AND MAPPING, LLC

Stephen E. Shannon, Professional Land Surveyor
 PO Box 796, La Porte, IN 46352
 219-877-8711 • www.acreslandsurveying.com

REVISIONS		JOB NUMBER: 18-1257	
DATE:	CODE:	NOT TO SCALE	
		DATE:	
		DRAWN BY: SES	
		REVIEWED BY:	1 1
		SES	

Section Corner Records

Railroad Township, Starke County, IN
 (T 32 N, R 4 W)