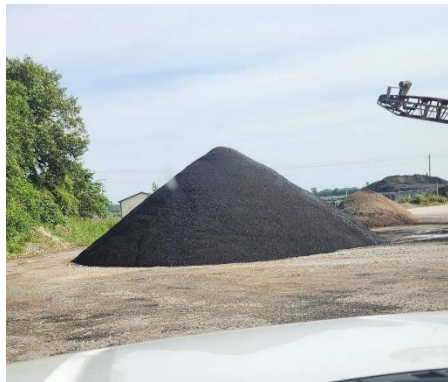


June 2024 Monthly Highway Report

Spring/Summer Operations

In the last few weeks we have been busy working on the pug mill machine and making pug. We have run into a few hurdles that we are still working with on the pug mill machine before we can finish our supply that we want to make this year but I expect by the end of this week to have everything back up and running. I don't expect our late start to be a problem this year and we still have plenty of time to pave what we wanted to pave this season. Our current pug mill machine was purchased for the amount of \$157,000 used, many years ago and our current paver was purchased in the amount of \$62,000 used, also many years ago. I don't have exact years on those purchases. We are trying to work with what we have this year but it is imperative that we upgrade these two assets soon as they are our main source of preservation to our infrastructure within Starke County.



This past week we have been able to start mowing the landfill and as you know this is not an easy job. I expect the first round of mowing the landfill to be finished today. We have been able to have at least three mowers out on a regular basis. However, we have run into several problems with the mowing equipment itself. The tractors are not the issue it is the mowing arm itself. On several of our tractors. We have looked into replacing these arms with an 88" SHD Rear Flail Mower. We had received a quote from Sourcewell in the amount of \$10,542.90. Right now, they are 120 to 150 days out on this equipment. Unfortunately, this will not help us this mowing season but we will need to purchase these in time for next season. We have hired a new Lead Mechanic, he will be going through his onboarding process this week and will be starting for the county within the next few weeks. We have also hired another Highway Maintenance Worker. This individual has a Class A CDL with Hazmat Indorsements. He also has experience in running the distributor truck which will come in handy for future chip and seal projects.

Starke County Landfill 750 E Just N/O SR 10 6/14/2024



Community Crossings Grants

Everything with the Community Crossing Grants are still on schedule.

2023-02 CCMG Grant for Chip Seal Program. Central Paving has been hauling in the stone needed for this project at the old gravel pit on 700 E. This is a prime location for this as it is near the two sections of roads that will be completed. The project consists of a total of 15 miles which will include Toto Rd between Hwy 23 and County Line (1200 E). Also, 1150 E. between 225 S. and 625 S. This project will take approximately 2-3 days.

2024-01 CCMG We have been awarded the grant for the HMA overlay on 600 N in certain areas from 600 E. to SR 23, 400 N from US 35 to Range Road, and the new road that was just built in Deer View Estates Subdivision (also know as Johnson Subdivision). The bid was awarded to Milestone Contractors and I have a contract I need signed tonight for that project.

Training

Two of our drivers as well as myself and the foreman have completed PASER training this year. PASER is the Pavement Surface Evaluation and Rating that we are required to complete every year and turn into LTAP.

