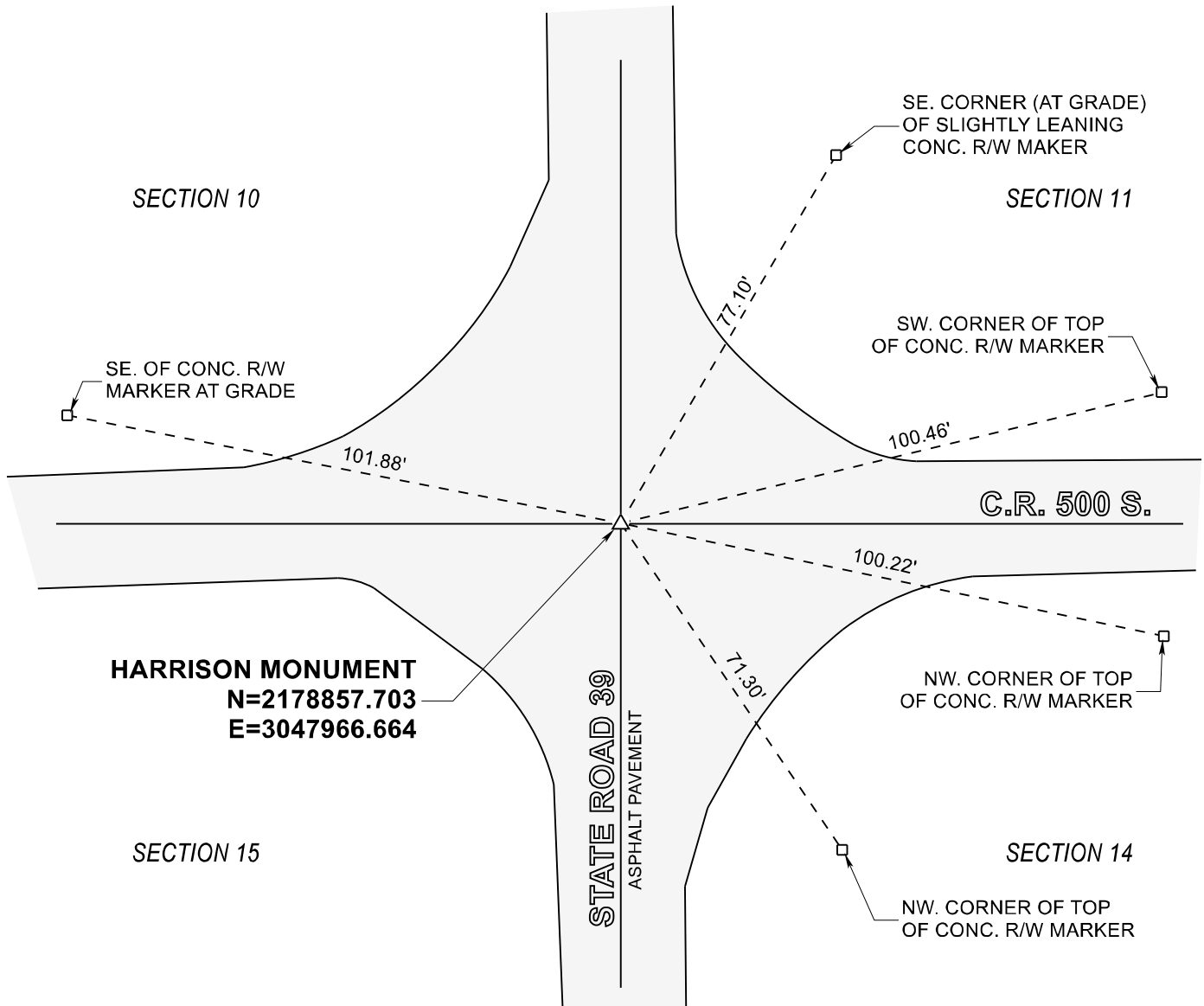


STARKE COUNTY SECTION CORNER RECORD

WAYNE TOWNSHIP

T 32 N, R 3 W

J17

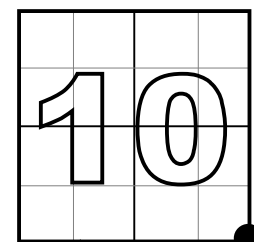


MONUMENT: HARRISON MONUMENT

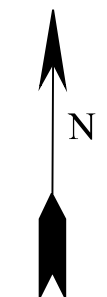
PARTY: SES DATE: 11/19/2020

COMMENTS: 1" I. PIN RECOVERED ON 3/11/03 BY VHJ, DWC, BJ. THE HARRISON MONUMENT APPEARS TO HAVE BEEN SET BY INDOT IN CONFORMANCE WITH THE PREVIOUS WITNESSES.

COORDINATE DATUM: INDIANA STATE PLANE WEST NAD83(2011).
Coordinates shown on this sheet are for informational purposes only, and are not to be used in lieu of measurements by a professional surveyor.



CORNER LOCATION
IN SECTION



NOT TO
SCALE