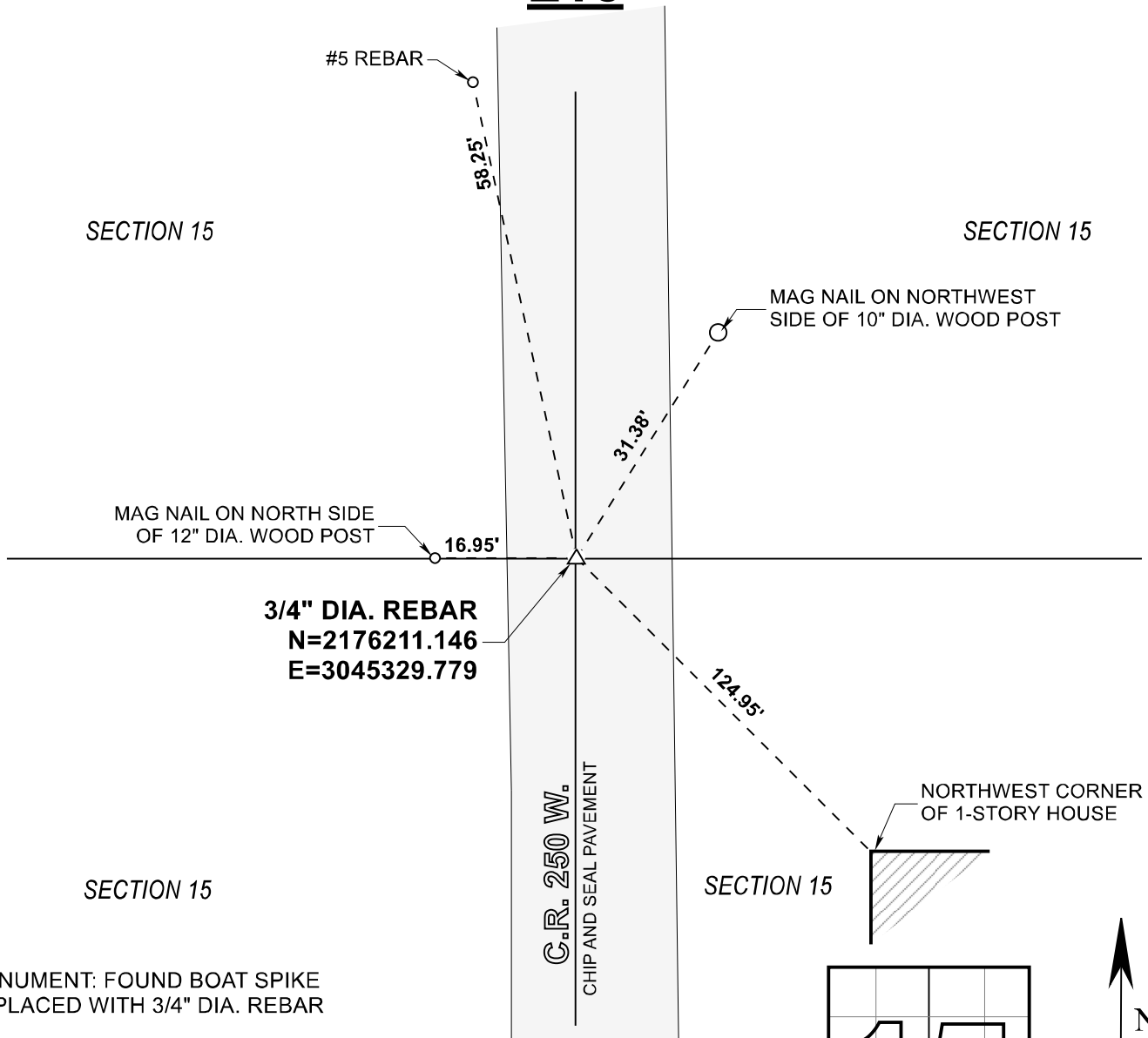


STARKE COUNTY SECTION CORNER RECORD

WAYNE TOWNSHIP

T 32 N, R 3 W

L15

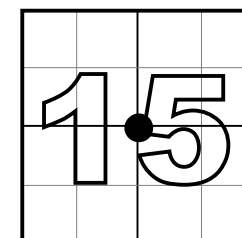


MONUMENT: FOUND BOAT SPIKE
REPLACED WITH 3/4" DIA. REBAR

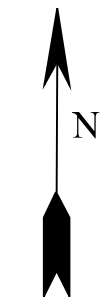
PARTY: SES DATE: 08/12/2022

COMMENTS: RECOVERED 2/12/04 BY VHJ, COD

COORDINATE DATUM: INDIANA STATE PLANE WEST NAD83(2011).
Coordinates shown on this sheet are for informational purposes only, and
are not to be used in lieu of measurements by a professional surveyor.



CORNER LOCATION
IN SECTION



NOT TO
SCALE

ACRES SURVEYING AND MAPPING, LLC

Stephen E. Shannon, Professional Land Surveyor

PO Box 796, La Porte, IN 46352

219-877-8711 • www.acreslandsurveying.com

SECTION CORNER PERPETUATION

WAYNE TOWNSHIP, STARKE COUNTY, INDIANA

REVISIONS

DATE: CODE:

JOB NUMBER: 20-1452

NOT TO SCALE

DATE: 04/02/2023

DRAWN BY: SES

REVIEWED BY:
SES

1

1