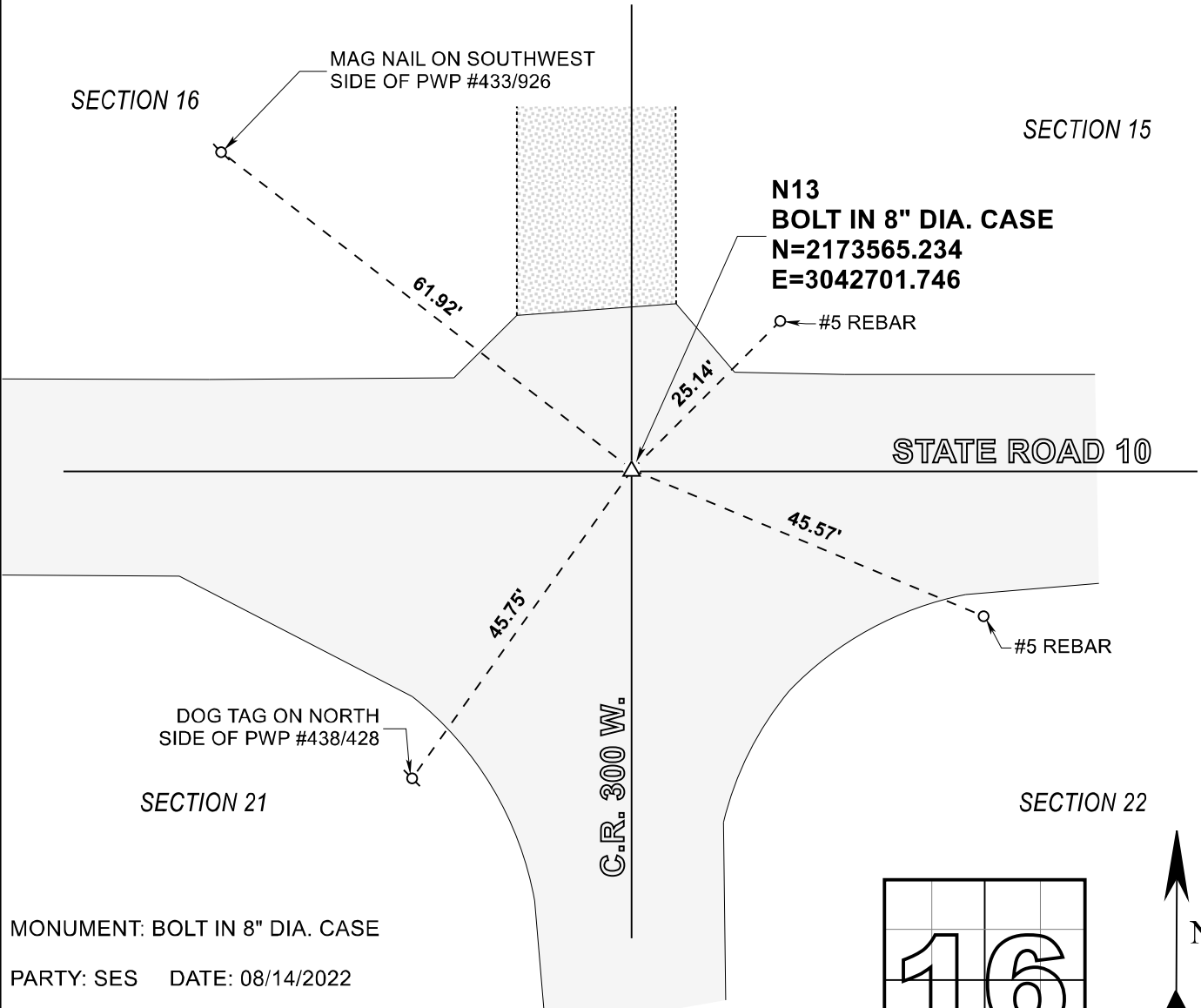


STARKE COUNTY SECTION CORNER RECORD

WAYNE TOWNSHIP

T 32 N, R 3 W

N13

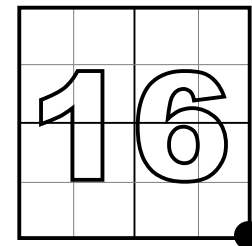


MONUMENT: BOLT IN 8" DIA. CASE

PARTY: SES DATE: 08/14/2022

COMMENTS: RECOVERED 03/12/03 BY VHJ, DWC, BJ.
FOUND RR SPIKE AND REPLACED WITH BOLT

COORDINATE DATUM: INDIANA STATE PLANE WEST NAD83(2011).
Coordinates shown on this sheet are for informational purposes only, and
are not to be used in lieu of measurements by a professional surveyor.



CORNER LOCATION
IN SECTION



NOT TO
SCALE

ACRES SURVEYING AND MAPPING, LLC

Stephen E. Shannon, Professional Land Surveyor
PO Box 796, La Porte, IN 46352
219-877-8711 • www.acreslandsurveying.com

REVISIONS		JOB NUMBER: 20-1452	
DATE:	CODE:	NOT TO SCALE	
		DATE: 04/02/2023	
		DRAWN BY: SES	
		REVIEWED BY: SES	1/1

SECTION CORNER PERPETUATION
WAYNE TOWNSHIP, STARKE COUNTY, INDIANA