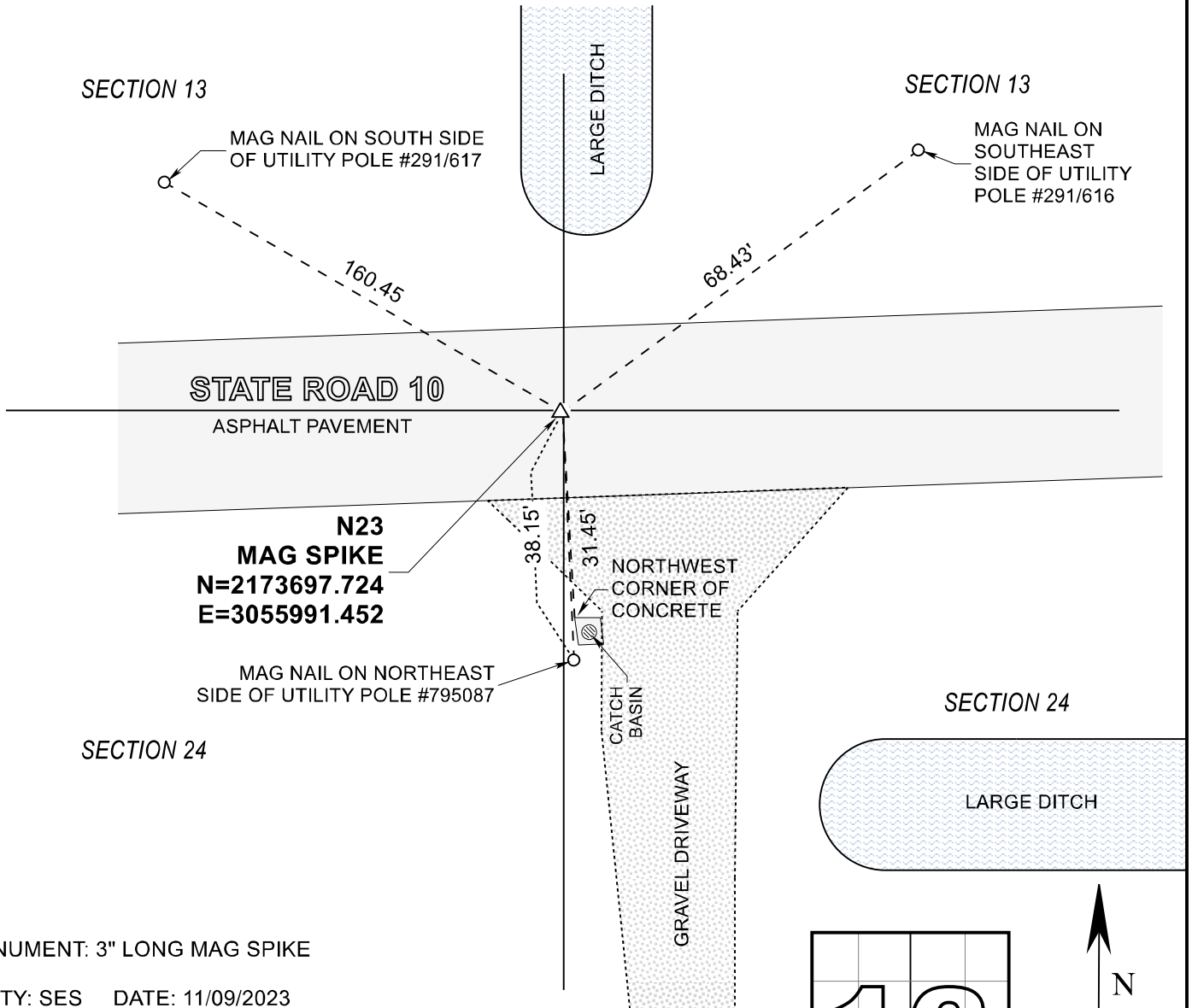


# STARKE COUNTY SECTION CORNER RECORD

WAYNE TOWNSHIP

T 32 N, R 3 W

**N23**

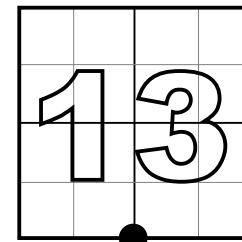


MONUMENT: 3" LONG MAG SPIKE

PARTY: SES DATE: 11/09/2023

COMMENTS: FOUND COTTON SPINDLE THAT MATCHED PREVIOUS WITNESSES. REPLACED WITH 3" LONG MAG SPIKE

COORDINATE DATUM: INDIANA STATE PLANE WEST NAD83(2011) GRID.  
Coordinates shown on this sheet are for informational purposes only, and are not to be used in lieu of measurements by a professional surveyor.



CORNER LOCATION IN SECTION



NOT TO SCALE

**ACRES SURVEYING AND MAPPING, LLC**

Stephen E. Shannon, Professional Land Surveyor  
PO Box 796, La Porte, IN 46352  
219-877-8711 • www.acreslandsurveying.com

**SECTION CORNER PERPETUATION**  
WAYNE TOWNSHIP, STARKE COUNTY, INDIANA

REVISIONS		JOB NUMBER: 20-1452	
DATE:	CODE:	NOT TO SCALE	
		DATE: 11/18/2023	
		DRAWN BY: SES	
		REVIEWED BY:	1 1
		SES	