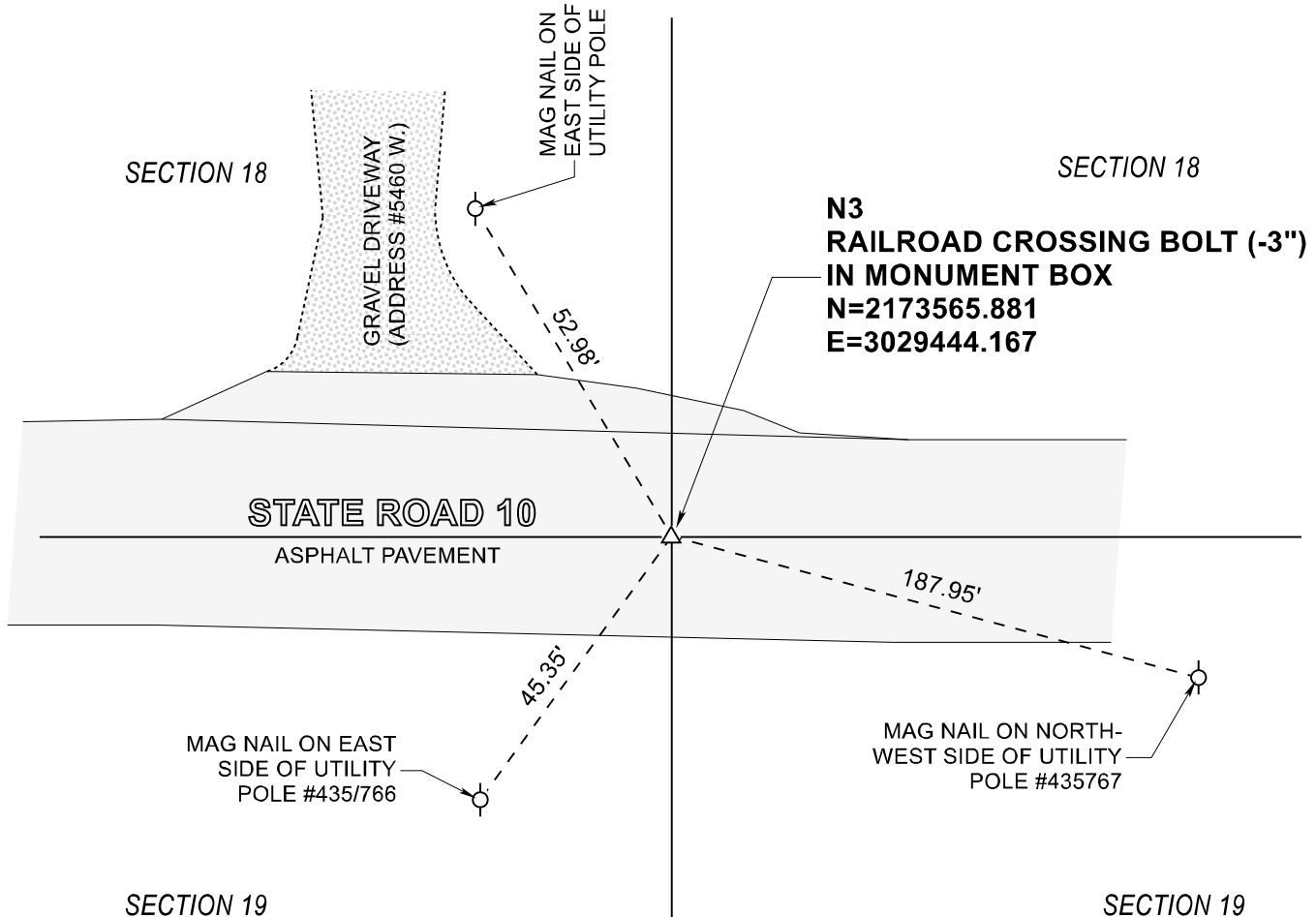


STARKE COUNTY SECTION CORNER RECORD

WAYNE TOWNSHIP

T 32 N, R 3 W

N3

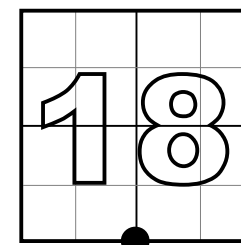


MONUMENT: RAILROAD CROSSING BOLT
IN MONUMENT BOX

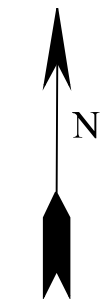
PARTY: SES DATE: 11/10/2023

COMMENTS: RECOVERED 3/12/03 BY VHJ, DWC, BJ

COORDINATE DATUM: INDIANA STATE PLANE WEST NAD83(2011) GRID.
Coordinates shown on this sheet are for informational purposes only, and are
not to be used in lieu of measurements by a professional surveyor.



CORNER LOCATION
IN SECTION



NOT TO
SCALE

ACRES SURVEYING AND MAPPING, LLC

Stephen E. Shannon, Professional Land Surveyor

PO Box 796, La Porte, IN 46352

219-877-8711 • www.acreslandsurveying.com

SECTION CORNER PERPETUATION

SECTION CORNER PERPETUATION

REVISIONS

DATE: CODE:

JOB NUMBER: 20-1452

NOT TO SCALE

DATE: 11/18/2023

DRAWN BY: SES

REVIEWED BY:
SES

1
1