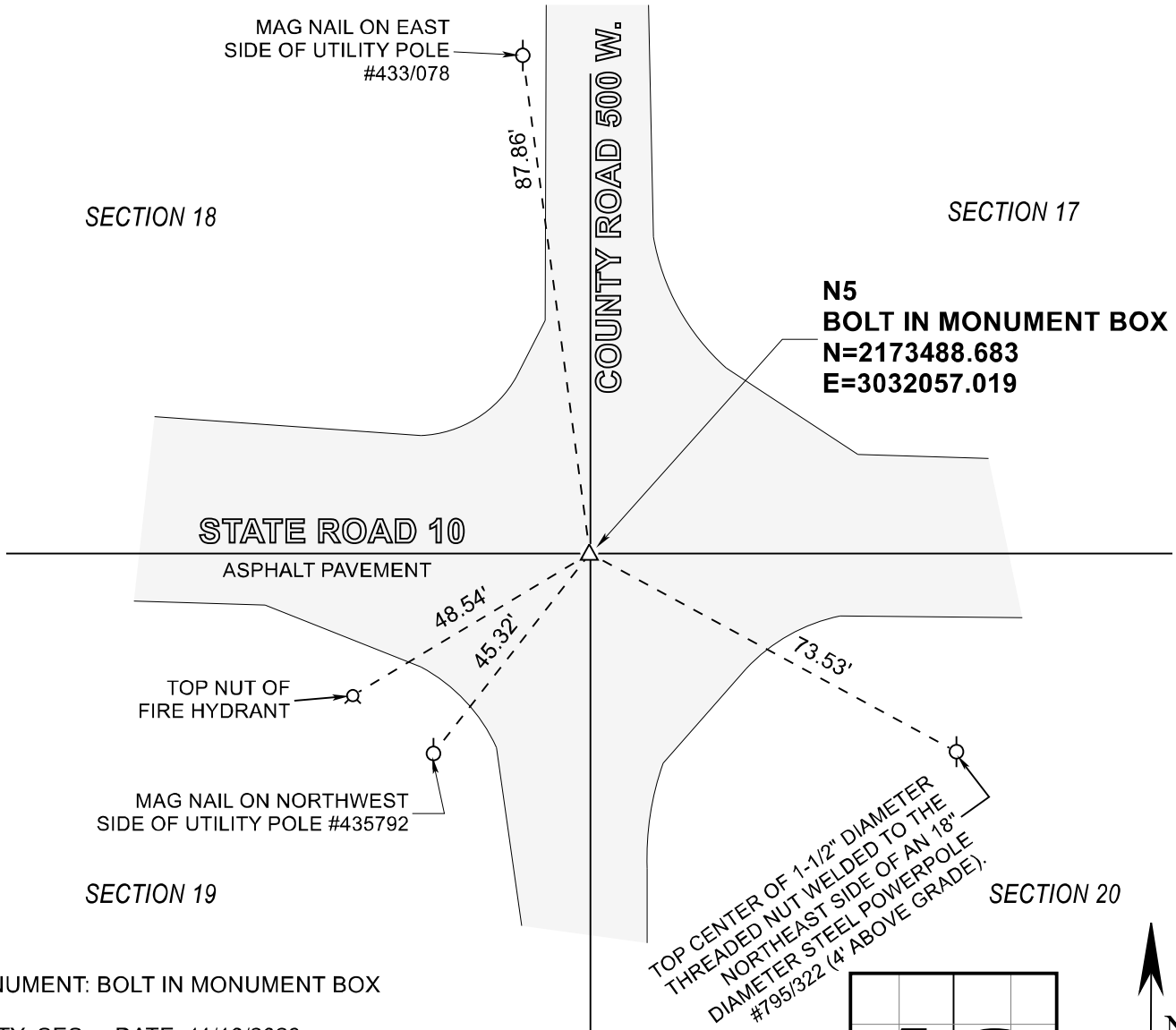


STARKE COUNTY SECTION CORNER RECORD

WAYNE TOWNSHIP

T 32 N, R 3 W

N5

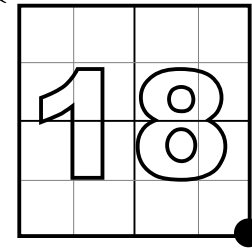


MONUMENT: BOLT IN MONUMENT BOX

PARTY: SES DATE: 11/10/2023

COMMENTS: RECOVERED 3/12/03 BY VHJ, DWC, BJ.
RR. SPIKE AS NOTED IN 10/02/84 RECORDS.
CORNER RECORD BOOK M-9, PG. 137.

COORDINATE DATUM: INDIANA STATE PLANE WEST NAD83(2011) GRID.
Coordinates shown on this sheet are for informational purposes only, and are not to be used in lieu of measurements by a professional surveyor.



CORNER LOCATION IN SECTION



NOT TO SCALE

ACRES SURVEYING AND MAPPING, LLC

Stephen E. Shannon, Professional Land Surveyor
PO Box 796, La Porte, IN 46352
219-877-8711 • www.acreslandsurveying.com

SECTION CORNER PERPETUATION

SECTION CORNER PERPETUATION

REVISIONS		JOB NUMBER: 20-1452	
DATE:	CODE:	NOT TO SCALE	
		DATE: 11/18/2023	
		DRAWN BY: SES	
		REVIEWED BY:	1/1
		SES	