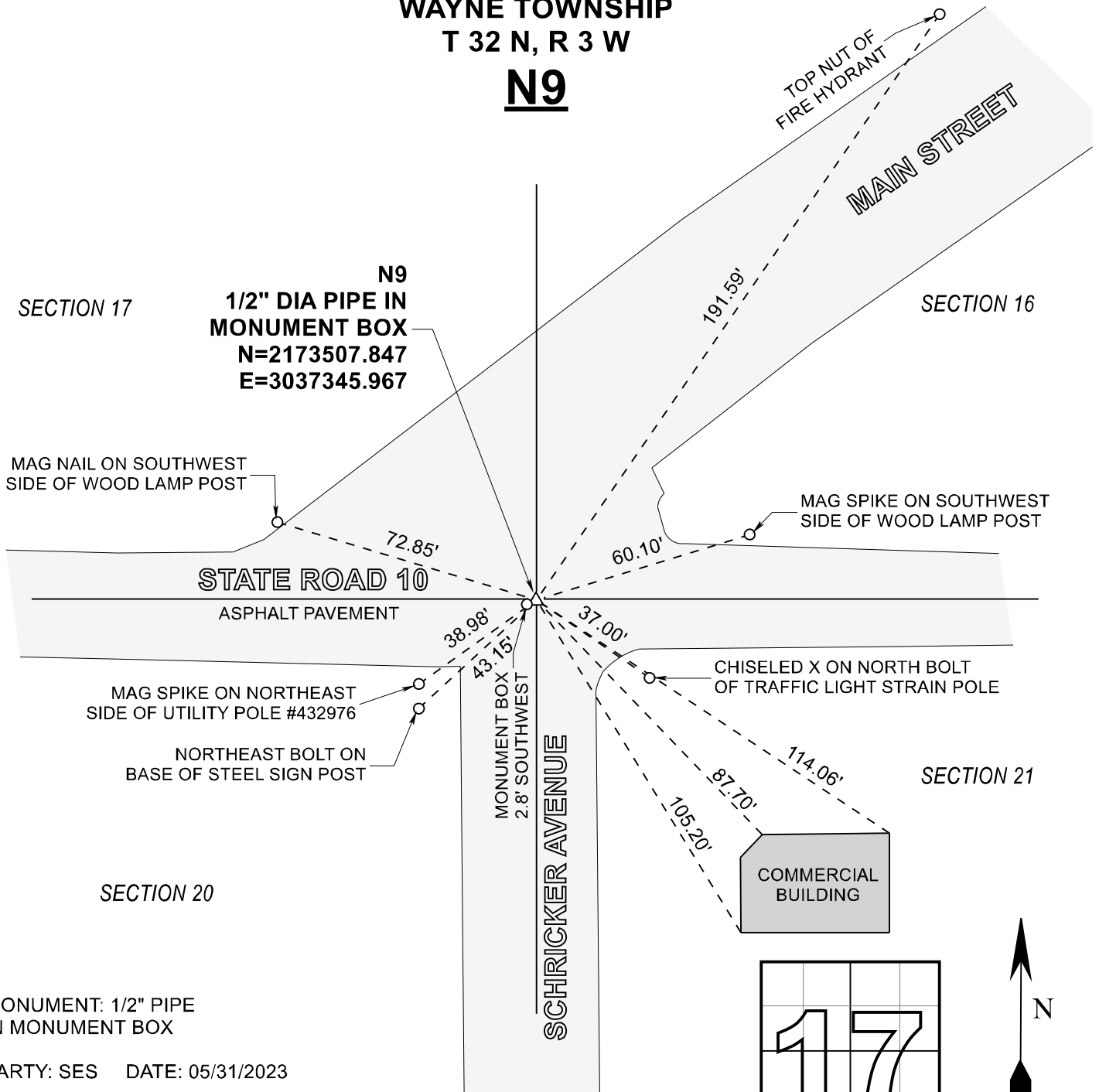


STARKE COUNTY SECTION CORNER RECORD

WAYNE TOWNSHIP

T 32 N, R 3 W

N9

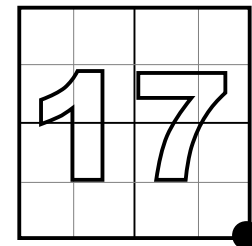


MONUMENT: 1/2" PIPE
IN MONUMENT BOX

PARTY: SES DATE: 05/31/2023

COMMENTS: RECOVERED 3/12/03 BY VHJ, DWC, BJ

COORDINATE DATUM: INDIANA STATE PLANE WEST NAD83(2011) GRID.
Coordinates shown on this sheet are for informational purposes only, and are not to be used in lieu of measurements by a professional surveyor.



CORNER LOCATION
IN SECTION



NOT TO SCALE

ACRES SURVEYING AND MAPPING, LLC

Stephen E. Shannon, Professional Land Surveyor
PO Box 796, La Porte, IN 46352
219-877-8711 • www.acreslandsurveying.com

SECTION CORNER PERPETUATION
WAYNE TOWNSHIP, STARKE COUNTY, INDIANA

REVISIONS		JOB NUMBER: 20-1452	
DATE:	CODE:	NOT TO SCALE	
		DATE: 11/18/2023	
		DRAWN BY: SES	
		REVIEWED BY: SES	1/1