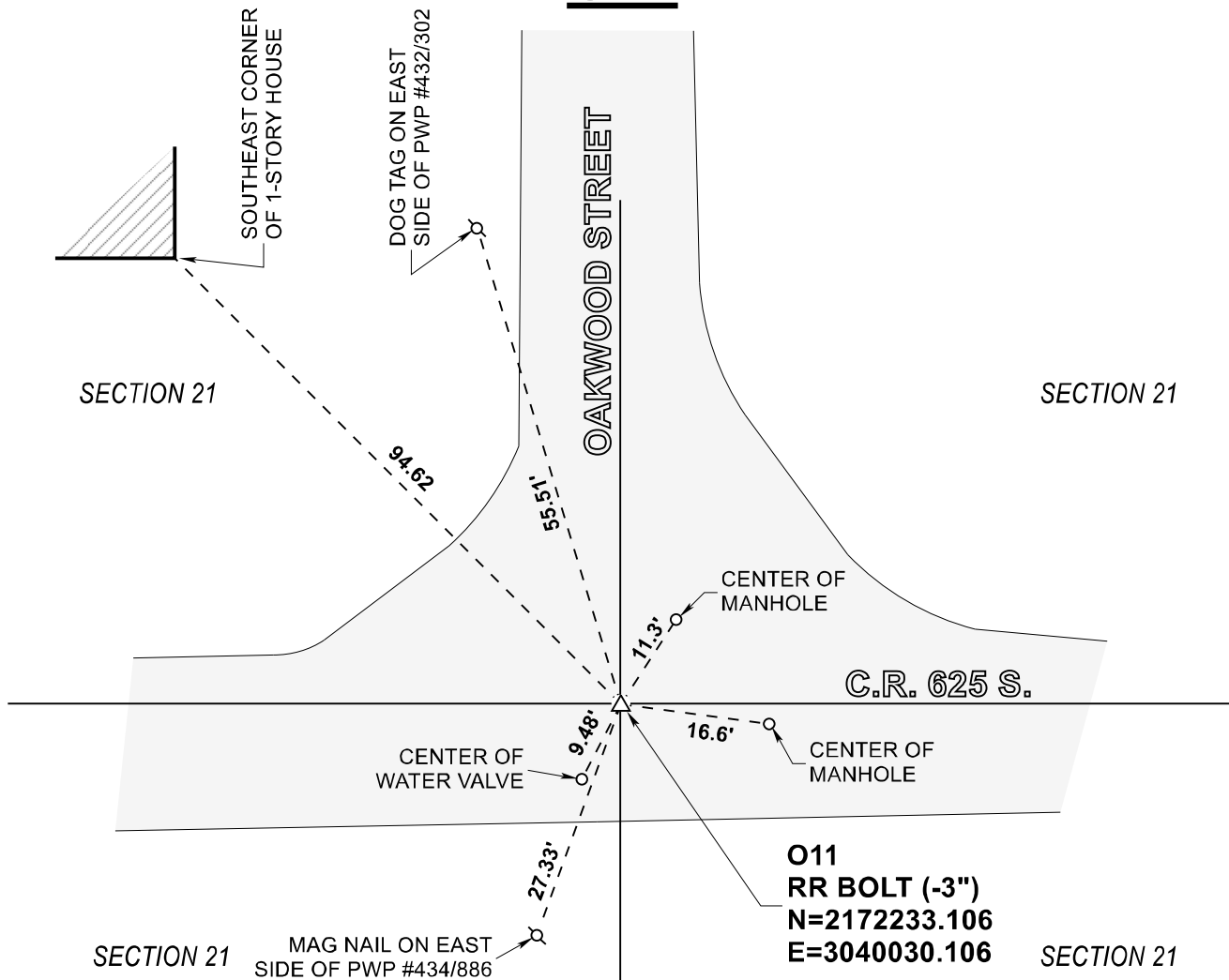


STARKE COUNTY SECTION CORNER RECORD

WAYNE TOWNSHIP

T 32 N, R 3 W

O11

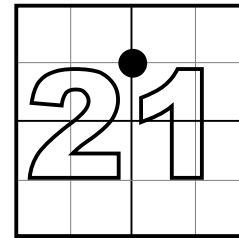


MONUMENT: RR BOLT (-3")

PARTY: SES DATE: 08/14/2022

COMMENTS: RECOVERED 12/31/03 BY VHJ, COD
(F) 1 1/4" I.P. WITH TRACK BOLT SET INSIDE 3" BELOW GRADE

COORDINATE DATUM: INDIANA STATE PLANE WEST NAD83(2011).
Coordinates shown on this sheet are for informational purposes only, and are not to be used in lieu of measurements by a professional surveyor.



CORNER LOCATION IN SECTION



NOT TO SCALE

ACRES SURVEYING AND MAPPING, LLC Stephen E. Shannon, Professional Land Surveyor PO Box 796, La Porte, IN 46352 219-877-8711 • www.acreslandsurveying.com	REVISIONS DATE: CODE:		JOB NUMBER: 20-1452	
			NOT TO SCALE	
SECTION CORNER PERPETUATION WAYNE TOWNSHIP, STARKE COUNTY, INDIANA			DATE: 04/02/2023	
			DRAWN BY: SES	
			REVIEWED BY: SES	1 1