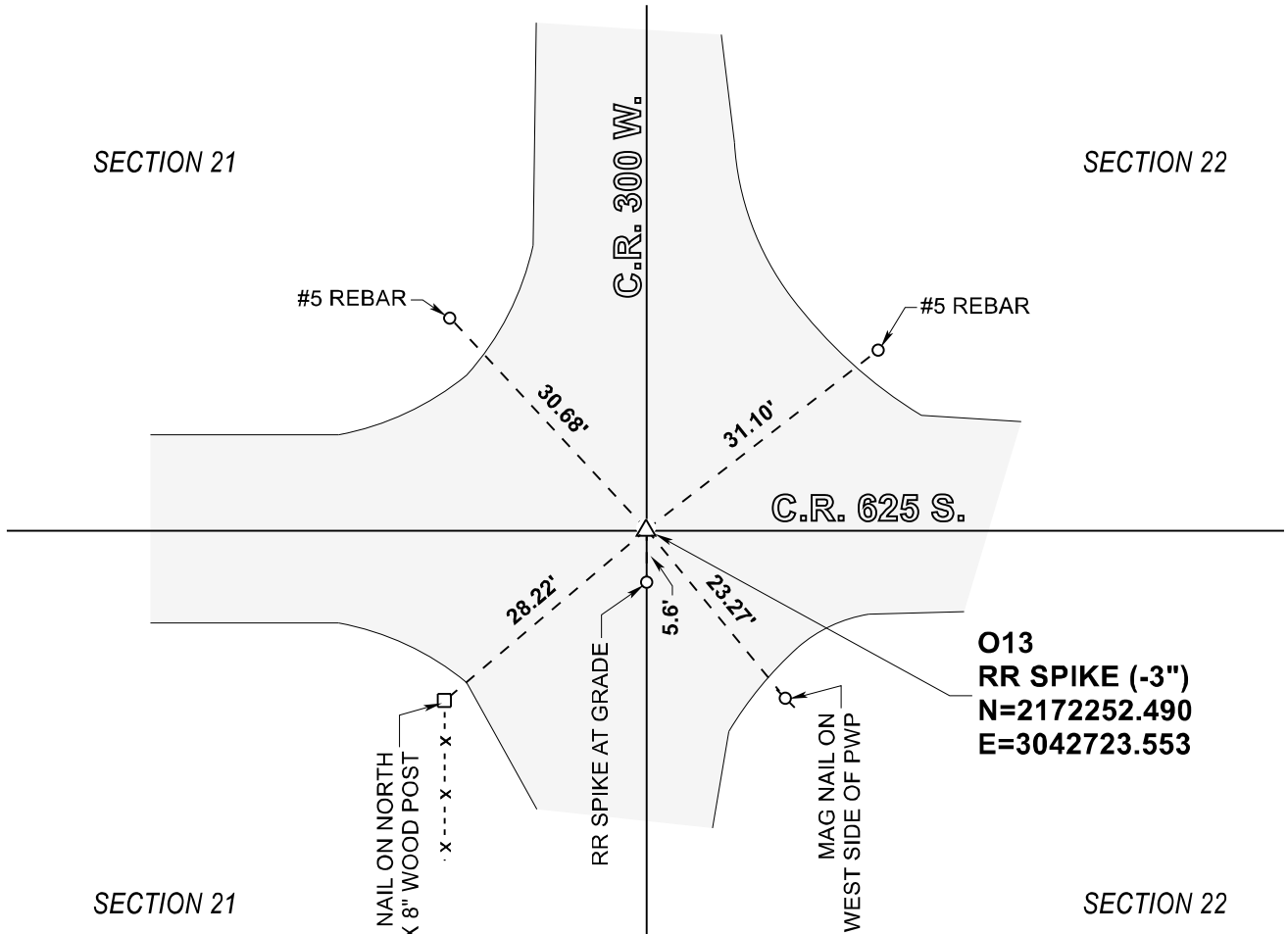


STARKE COUNTY SECTION CORNER RECORD

WAYNE TOWNSHIP

T 32 N, R 3 W

O13



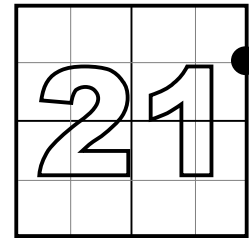
O13
RR SPIKE (-3")
N=2172252.490
E=3042723.553

MONUMENT: RR SPIKE (-3")

PARTY: SES DATE: 08/14/2022

COMMENTS: RECOVERED 12/31/03 BY VHJ, COD

COORDINATE DATUM: INDIANA STATE PLANE WEST NAD83(2011).
 Coordinates shown on this sheet are for informational purposes only, and are not to be used in lieu of measurements by a professional surveyor.



CORNER LOCATION
IN SECTION



NOT TO SCALE

ACRES SURVEYING AND MAPPING, LLC

Stephen E. Shannon, Professional Land Surveyor
 PO Box 796, La Porte, IN 46352
 219-877-8711 • www.acreslandsurveying.com

SECTION CORNER PERPETUATION
 WAYNE TOWNSHIP, STARKE COUNTY, INDIANA

REVISIONS		JOB NUMBER: 20-1452	
DATE:	CODE:	NOT TO SCALE	
		DATE: 04/02/2023	
		DRAWN BY: SES	
		REVIEWED BY: SES	1 1