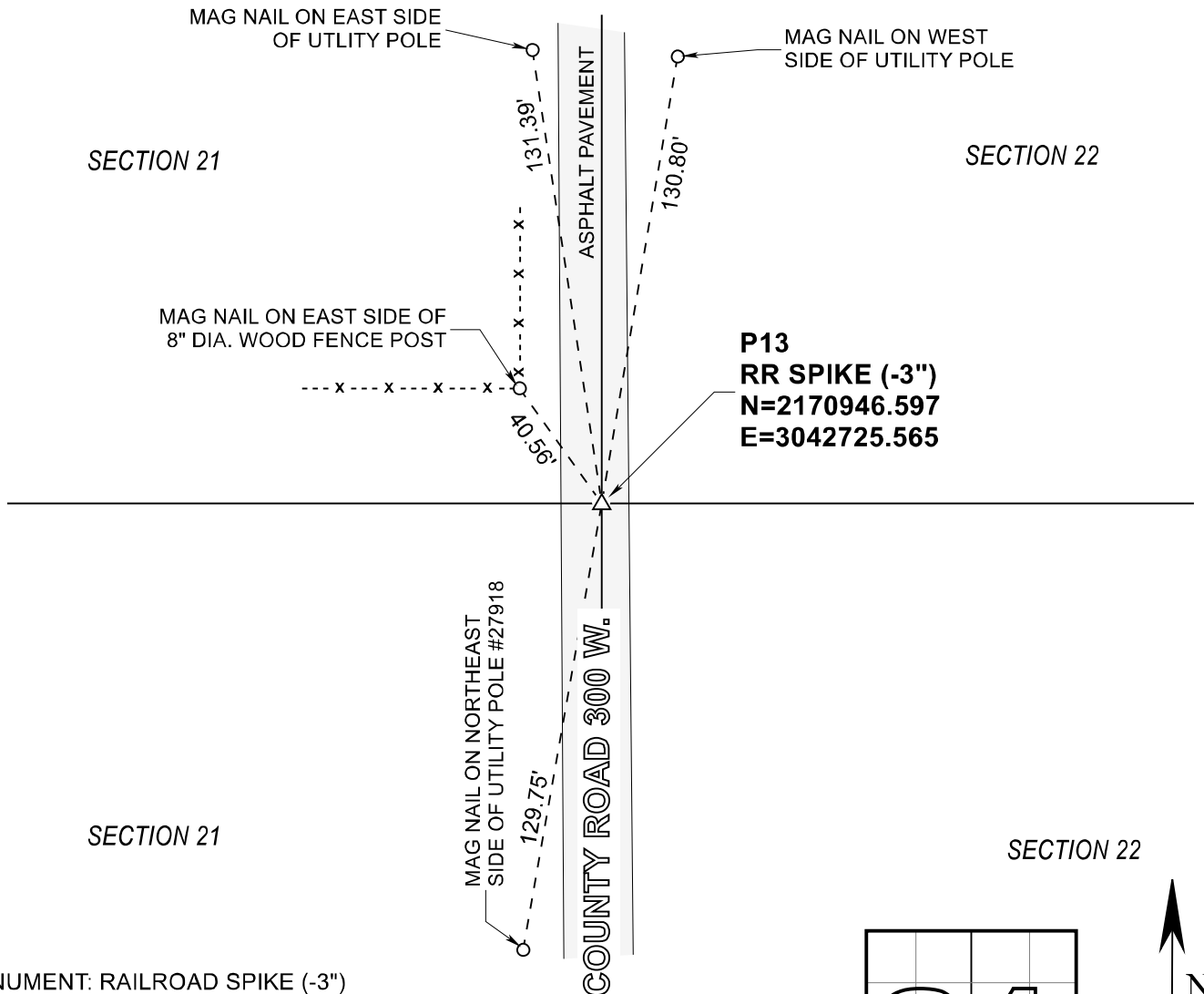


STARKE COUNTY SECTION CORNER RECORD

WAYNE TOWNSHIP

T 32 N, R 3 W

P13

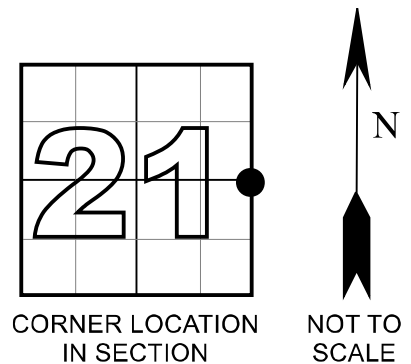


MONUMENT: RAILROAD SPIKE (-3")

PARTY: SES DATE: 11/10/2023

COMMENTS: RECOVERED 12/31/03 BY VHJ, COD

COORDINATE DATUM: INDIANA STATE PLANE WEST NAD83(2011) GRID.
Coordinates shown on this sheet are for informational purposes only, and are not to be used in lieu of measurements by a professional surveyor.



ACRES SURVEYING AND MAPPING, LLC

Stephen E. Shannon, Professional Land Surveyor

PO Box 796, La Porte, IN 46352

219-877-8711 • www.acreslandsurveying.com

SECTION CORNER PERPETUATION

WAYNE TOWNSHIP, STARKE COUNTY, INDIANA

REVISIONS

DATE: CODE:

JOB NUMBER: 20-1452

NOT TO SCALE

DATE: 12/04/2023

DRAWN BY: SES

REVIEWED BY:
SES

1
1